



# ALWAYS MOVING FORWARD

---

LANDMARK  COLLEGE

2015-2016 ANNUAL REPORT



## An Inclusive **COMMUNITY**

"We are truly an inclusive community that adapts to the evolving needs of our students and their families."

Pictured with Dr. Eden are graduates (left to right) Rhea Weinstein AA '14, BA '16; LaTieya Palmer AA '16; Jackson Martin, AA '16; and Jessica Hagen AA '16.

## From the President's Desk

To paraphrase Isaac Newton, we can only see far because we stand upon the shoulders of giants. At Landmark College, that giant is Dr. Charles Drake, the founder of Landmark College.

At our College's convocation ceremony last August, founding faculty member Kathy D'Alessio reflected on Dr. Drake's legacy and his Principles of Teaching. "Principles such as providing ample opportunities for success, being mindful of not assuming anything about the student, and spiraling back for good learning were polished and scrubbed until their shine could be seen in every tutorial, in every classroom, and in every advising meeting," Prof. D'Alessio recalled. "But these principles would have become meaningless if they were not coming from a place of authenticity and trust. Underlying all of these principles was our belief in each student's gifts, talents, resilience, and fortitude."

Since its founding, Landmark College has embraced a somewhat revolutionary philosophy of education. It's one that involves and requires buy-in, not only from our entire College community, but also from the broader community. LC has always honored Dr. Drake's legacy by continually enhancing and evolving his initial model to meet the needs of an increasingly diverse population of students who are not served well by the inflexible orthodoxy of conventional education.

As we become more and more aware of the fact that we are a specialty college — regardless of our new programs, growth, and changes — we have never lost sight of the fact that we must "perform" like all other colleges. For example, in 2016, we successfully completed our 10-year accreditation process. This intensive process involved every area of the LC community and resulted in our continued accreditation by the New England Association

of Schools and Colleges (NEASC). This is particularly rewarding considering that the process occurred during a period of significant programmatic growth. These "sea changes" can be difficult for small colleges, and LC has, like the higher education industry as a whole, experienced its share of challenges. However, NEASC has affirmed the College's successful transition to a baccalaureate-granting institution.

While we manage the pace of adaptive change and focus on student outcomes, a quality living-learning experience, and the overall value of an LC education, we are embarking upon a new Strategic Plan. Elements of the plan, which will emerge in 2017, will certainly include aspects tied to program excellence, business model sustainability, and others, as well as components that help "future proof" LC and our students. We must be engineered in a way to adapt to inevitable change in the world, and our students must have core skills, strengths, and competencies that allow them to succeed in an ever-changing and interrelated world. To that end, we are launching a program that provides more work experience to LC students (whether on-campus or off-campus internships), providing support via our Centers for Diversity and Inclusion, and finishing a proper athletics field for our athletics and wellness efforts.

It is true that one never steps in the same river twice. That is an accurate description of our maturing and highly focused institution. Dr. Drake created something that has grown and changes continually, but at its core remains recognizable, beautiful, and powerful.

With regards,



Peter A. Eden, Ph.D.  
*President*

While we manage the pace of adaptive change and focus on student outcomes, a quality living-learning experience, and the overall value of an LC education, we are embarking upon a new Strategic Plan.



# The Critical Role of Scholarship Support

At LC, we take great pride in being recognized as the “College of Choice for Students Who Learn Differently.” But affording the cost of higher education — especially at a highly specialized college like ours — is increasingly beyond the financial means of many of our families.



**HOLLY ROBINSON PEETE**

LC’s Scholarship Gala in New York City featured guest of honor and LD Luminary Award recipient Holly Robinson Peete, well-known actress, activist, and co-founder of the HollyRod Foundation. Featured with Peete are current Landmark scholarship students Isaac Alam and Alicia Keating, both of whom say attending LC would be an impossibility without scholarship support.

That is the reason why growing our scholarship fund has become an institutional priority at LC. On April 19, 2016, the College held its scholarship gala, **Unlocking Futures**, in New York City. That night, nearly 200 donors and friends of the College helped raise close to \$250,000 toward scholarship support.

The 2015-16 fiscal period also marked the second year of the Access to Innovative Education (AIE) fund, seeded through a five-year, \$500,000 grant from the Johnson Scholarship Foundation. Through a combination of AIE scholarship money and LC institutional aid, nine students received full scholarships last year. The College raised \$150,000 in matching funds as required by the Johnson Foundation grant; in years three, four, and five, matching funds must increase by \$50,000 per year.

Other contributors to the AIE fund in 2015-16 include: F.I.S.H. Foundation, Mount Laurel Foundation, William H. Pitt Foundation, and the Solon E. Summerfield Foundation.

## Unlocking Futures Gala Sponsors

### Event Sponsor

Charles and Nan Strauch

### Table Patron

Banta Immigration Law/  
Robert, Terry, and Sallie Banta  
Robin Dahlberg and Ted Maynard  
Linda Kaboolian and  
Harold Nahigian  
Robert and Anette Lewis  
John and Helen Lobrano  
Steve and Lori Ward  
Alan and Cici Wilkinson

### Patron

Richard and Anne Dubbs  
Bill and Barbara Epifanio  
Buford and Linda Lewis  
Steve Littman and Diane Tarbell  
Jon and Linda Moran  
Robert and Lora Munley III  
Craig and Deanne Shallcross  
Michelle Warra and Philip S. Kumar

### Benefactor

Bennett Fradkin  
Daniel and Devon MacEachron  
Scout MacEachron  
Maryellen Rancourt

## Words of Thanks From Our Students



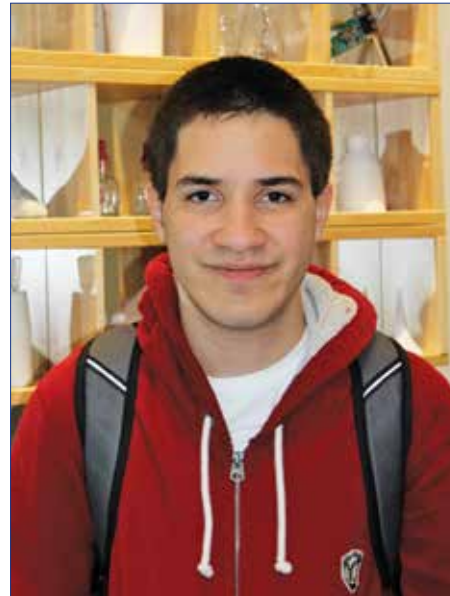
**RYAN GONSALVES**  
Bronx, New York

“Being at Landmark has taught me how to be comfortable in my own skin and shown me that I’m not the only person who has a learning disability. In a sense, Landmark College saved my life. I can’t put into words how thankful and honored I am to receive scholarship aid.”



**ASHLEE CHARETTE**  
Saranac Lake, New York

“Three years ago, I would have described myself as someone with no self-confidence, no plan, no true aspirations. But since coming to Landmark College — and thanks to the scholarship support I now receive — I can honestly say that my life has changed. I see myself in an entirely different light.”



**NAHUEL FELIU**  
Norwalk, Connecticut

“We could barely afford Landmark College. My family worked really hard to find the funds to get my foot in the door for the first semester. I am extremely grateful for this scholarship opportunity. It’s allowing me to stay focused on my goals and not worry about the burden on my family.”



**EMILY BRADLEY**  
South Riverton, Utah

“I’ve struggled with college in the past due to large class sizes and the lack of academic and social supports. These are all factors that Landmark College addresses. The aid I’ve received is allowing me to thrive academically, socially, and emotionally — something that I have greatly needed.”

# A Victory for Sports at Landmark

Athletics are playing an increasingly central role in campus life at Landmark College.

Sports have always been important to Massachusetts native Jeffrey Marciano. He competed as a gymnast until he was 14, then wrestled and played football, volleyball, and soccer in high school.

But ADHD and an auditory processing disorder kept interfering with his schoolwork. Ultimately, poor grades forced Jeff to give up his dream of playing NCAA-level sports.

He first came to LC in 2013, stayed for a single Bridge Semester, and returned to college in Florida. Two years later, Jeff decided to return to LC to complete his associate degree; he's now on track to earn a B.A. in Liberal Studies here next spring.

As an LC student, Jeff has immersed himself in his academic studies — and sports continue to be a critical outlet for him. “Athletics have always been important to me because they give me structure and something to look forward to,” he says. “I know I’ll have a chance to be out on the field or do something active after being in class all day.”

Jeff also credits the College’s “living-learning” environment as a key part of his academic success. He believes extracurricular activities like soccer and basketball (both of which he has played at LC) are informed by what happens in the classroom.

“There are multiple ways to learn in a classroom, and LC opens those up for you. It’s the same way with sports. Looking at a playbook can be hard for students with dyslexia; listening to a coach explain plays can be hard if you have an auditory processing disorder. At Landmark, coaches work with us to help us find our strengths and figure out the best way to communicate — just like in the classroom.”



JEFF MARCANO AA '15, BA '17

“It’s interesting to see how athletics have evolved since I’ve been here. Now that LC has transitioned to a four-year college, the ability to play sports has become much more important to incoming students.”

# The Winning Move: LC's New Charles Drake Athletics Field

---



Phase II of the project, to build a field house adjacent to the Charles Drake Athletics, will begin in 2017.

Donor support has been generous for the College's new all-weather turf field.

Landmark College has raised \$1.3 million toward its \$1.5 million fundraising goal for its new all-weather turf Charles Drake Athletics Field, so named to honor the legacy and vision of LC's founder. Through this investment, the College hopes to assure that its growing numbers of student-athletes have a proper playing field for sports such as soccer, as well as for outdoor physical education.

Turf fields contain an infill material, and the most common is crumb rubber. However, fill made of coconut husk and cork will be used on the Charles Drake Field "because it is both environmentally friendly and a safer alternative to other infill materials," says Dr. Peter Eden, president of Landmark College. Ground was broken on the field mid-year, and construction is now underway. Completion is expected in 2017.

"The level of athletic experience and talent among our students is impressive," says Steve Stanley, director of athletics, fitness, and recreation. "Many of them have come from successful high school programs and want to pursue their passion for sports here. Athletics are having a real impact on their lives and on their academic success."

# Connecting Learning to Careers

Thanks to Landmark College's growing emphasis on career outcomes, more and more LC students are gaining exciting, hands-on internships near and far from our campus.



**MATT BAVELOCK**  
AS Life Sciences '16

"I'm a kinesthetic learner, so getting hands-on experience working in a lab enabled me to understand and retain more than any lecture could."

As an intern at Vermont Genetics Network, Matt made a significant biological discovery in the field of virology.



**ROB LUTZ**  
AA Business '16

"Working with Dan Snow was one of the best hands-on working opportunities that I could be part of. From start to finish, there wasn't a second that I wasn't fully engaged in the project."

Rob interned with Vermont artist Dan Snow to help build LC's land art structure, "Finn Island."

The renaming of the Office of Transfer and Career Services in 2015 to the Office of Transfer, Career, and Internship (TCI) Services was a clear signal of the College's commitment to strengthening the link between academics and employment.

In addition to building strong relationships with employers, TCI Director Jan Coplan says that TCI also is focused on developing student career readiness through workshops and special programs.

Among the College's newest career partners is **Hasbro, Inc.**, of Rhode Island, which will provide up to four paid summer internships for LC students. **Joseph Eder BA '16** earned the first LC internship at the famous multinational toy and board game firm.

All internships offered through TCI are credit-bearing, and most are paid assignments.

## 2015-17 Internship Locations

BioTek Instruments, Inc.  
Brattleboro Development Credit Corporation  
Brown University Summer Programs — Residence Life  
Fradkin McAlpin Architectural Firm  
Hasbro, Inc.  
Kensington Vanguard National Land Services  
Lexalytics (a text analytics software company)  
Putney Central School  
Putney Co-op  
Stone Trust — Dan Snow  
U.S. Department of Agriculture  
Vermont Experiment Program to Stimulate Competitive Research (VT. EPSCoR)  
Vermont Genetics Network  
Vermont/NH Veterinary Clinic  
Watsonville Law Center  
The Wolf School



# Stimulating Student Innovation and Entrepreneurship

Working to transform the study and teaching of business at Landmark College.



## INAUGURAL MORGAN LE FAY SYMPOSIUM

Pictured attending the inaugural Morgan Le Fay Symposium (left to right) were: Landmark College students Jonathan Wallentine and Rob Lutz; Professor Roxanne Hamilton; student Ashlee Charette; Dr. Manju Banerjee, vice president for Educational Research and Innovation; Paul McCulley; student Elizabeth Bellingham; Peter Fisher; and student Mitchell Barrett.

Year Two of the **Morgan Le Fay Center for Advances in Economics, Business, and Entrepreneurship Instruction** — funded by a \$1 million grant from economist Paul McCulley's Morgan Le Fay Dreams Foundation in 2014 — culminated in a number of notable milestones:

- A national survey of economics and business faculty on their awareness and use of universal design pedagogies in teaching economics
- A new concentration in Entrepreneurship and Innovation
- Awarding of \$10,000 in Landmark Entrepreneurial Accelerator Program (LEAP) grants to LC students Mario Ornelas, Marc Thurman, and Ryan Gonsalves
- Expanded extracurricular offerings, including a stock club
- A new strand in LC's online certificate program, titled Executive Function and LD: Integrating Strategies, Study Skills, and Technology
- The purchase of 30 iPads to support Language Intensive Curriculum (LIC) students

LC's first Morgan Le Fay Center symposium, titled **Understanding Our Neurodiverse World: A Symposium on Best Practices for Teaching Business and Economics to Students Who Learn Differently**, took place in October 2016. McCulley, a senior fellow and adjunct professor at Cornell Law School, delivered the keynote address.

Former Under Secretary of the Treasury for Domestic Finance **Peter Fisher**, now a senior lecturer at Dartmouth College Tuck School of Business and senior fellow at Tuck's Center for Global Business and Government, led a discussion among Landmark College students about the difficulties they have faced in school. (Fisher is dyslexic.)

Other presenters included **Dr. Oskar Harmon** of the University of Connecticut; **Dr. Manju Banerjee**, LC's vice president for Educational Research and Innovation; and LC business faculty members Professor **Jim Koskoris** and **Dr. Matthew Pham**.

# Advancing the College's Mission Through Grant Support

External grants supporting new research initiatives, special projects, staff training, and scholarship support are increasingly important as Landmark College grows and expands its influence. Over the last three years, more than \$2.6 million has been awarded to Landmark College in the form of federal, state, and foundation grants.

In 2015-16, grants were raised in the following key areas:

## Research Grants

### **National Science Foundation • Research Experiences for Undergraduates (REU) REU Supplement**

Social Presence During Instructor Mediated Synchronous Versus Asynchronous On-Line Course Discussions: A Study of Undergraduate Students with Learning Disabilities

### **Bringing Theory to Practice**

Stress Management and Resiliency Training (S.M.A.R.T.) for First-Year Students with Learning Disabilities

## Historic Preservation & Environmental Stewardship

### **National Endowment for the Humanities Windham College Preservation Project**

Primary source preservation of the unique art and counterculture impact of a liberal arts college.

Landmark College and the Putney Historical Society are partners in the relocation and archiving of Windham College newspapers, journals, photos, and artifacts.

### **Vermont Agency of Natural Resources, Department of Forests, Parks & Recreation Tree Campus, USA**

This project is introducing students to environmental stewardship through service learning.

## Excellence in STEM Teaching

### **Arthur Vining Davis Foundations Innovations in STEM Teaching and Learning for Students with LD**

This grant supports the creation of a technology-rich space in the College's Nicole Goodner MacFarlane Science, Technology & Innovation Center. The space is equipped with virtual reality and neuroscientific tools available to students who learn differently, educators, and researchers at the College.

### **National Science Foundation • Improving Undergraduate STEM Education (IUSE)**

Interdisciplinary Coaching as a Nexus for Transforming How Institutions Support Undergraduates in STEM (iCAN)

This is a sub-award through the University of Central Florida.

## Scholarship Support

Providing students of need with access to LC's unique educational opportunities is a priority. Access to Innovation Education scholarships cover up to full tuition and are available across all disciplines.

### **F.I.S.H. Foundation**

Access to Innovative Education (AIE)

### **Mount Laurel Foundation**

Access to Innovative Education (AIE)

### **William H. Pitt Foundation**

Access to Innovative Education (AIE)

### **Solon E. Summerfield Foundation**

Access to Innovative Education (AIE)

### **Solon E. Summerfield Foundation**

Solon E. Summerfield Endowed Scholarship  
Ongoing support for endowed scholarship support at Landmark College

"Grant support gives our College the needed financial resources to undertake innovative initiatives that we otherwise simply could not afford," says Lynne Feal-Staub, director of the Office of Grants and Sponsored Programs, who joined the College in 2013. "Grants enable our faculty, administration, and staff to continue the College's leadership as a pioneering force in teaching and learning for students who learn differently — and enhance our ability to attract and retain talented students. They play a vital role in advancing our mission by providing a platform for great ideas."

## Landmark College 2015–16

# Honor Roll of Donors

Landmark College is truly grateful for the generous gifts made in 2015–16 by hundreds of donors, including alumni, current students, parents, grandparents, faculty, staff, trustees, corporations, foundations, vendors, and other friends.

The following Honor Roll of Donors reflects gifts made to Landmark College from July 1, 2015, through June 30, 2016.

### Chairman's Council

#### Gifts of \$25,000 and over

Anonymous  
 Mr. Douglas A. Berthiaume & Mrs. Diana M. Berthiaume  
 Bread Loaf Corporation  
 Mr. Steven A. Broomer & Mrs. Lisa N. Broomer  
 Ms. Margaret L. Buckman  
 Mr. Martin Elias  
 Mr. Bill Epifanio & Mrs. Barbara Epifanio  
 F.I.S.H. Foundation, Inc.  
 Frelinghuysen Foundation  
 Mrs. Holly Hayes & Mr. Carl Stern  
 Ms. Eunice O. Higgins  
 Mr. Bretton Himsworth '90 & Mrs. Julieanne Himsworth  
 Jewish Communal Fund of New York  
 Johnson Scholarship Foundation  
 Mr. Alan S. Katz & Ms. Jerry M. Simmons  
 Katz/Simmons Family Foundation  
 Mr. Robert E. Lewis & Mrs. Anette M. Lewis  
 Mr. John D. Lobrano & Mrs. Helen Lobrano  
 Mr. Alex MacFarlane &  
     Mrs. Nicole Goodner MacFarlane '98  
 Mr. Roger MacFarlane & Mrs. Ruth MacFarlane  
 Mr. Edwin S. Maynard & Ms. Robin L. Dahlberg  
 Mr. Paul A. McCulley  
 Mr. Kevin J. McLaughlin & Mrs. Lynn McLaughlin  
 Dr. Jon F. Moran & Mrs. Linda R. Moran  
 Morgan Le Fay Dreams Foundation  
 Dr. Harold Nahigian & Dr. Linda Kaboolian  
 William H. Pitt Foundation  
 Mr. Charles S. Strauch & Mrs. Nan Y. Strauch  
 Solon E. Summerfield Foundation  
 Tambour Foundation  
 The Arthur Vining Davis Foundations  
 The Strauch Family Charitable Fund  
 Mr. Peter Portner van Roijen & Mrs. Beatrice van Roijen  
 Mr. Alan W. Wilkinson & Mrs. Cynthia K. Wilkinson

### President's Circle

#### Gifts of \$10,000 and over

Dr. Madiha Al Shaibani  
 Mr. Briar Alpert & Ms. Susan Vigsnes  
 Ms. Grace A. Ames  
 Mr. Robert Banta & Mrs. Terry Banta  
 Dr. Alfred H. Beattie & Mrs. Ruth Anne Beattie  
 Mr. James H. Click & Mrs. Vicki Click  
 Mr. William R. Cotter & Mrs. Debra R. Cotter  
 Ernst & Young Foundation  
 Mr. Francis Fairman & Mrs. Jill Harmon  
 Ms. Nancy Feinberg  
 Mr. David LaRue & Mrs. Cindy LaRue  
 Mr. Steven Littman & Ms. Diane Tarbell  
 Maurice & Carol Feinberg Family Foundation  
 Mr. Arthur B. Page & Mrs. Connie Page  
 Roger I. & Ruth B. MacFarlane Foundation  
 Dr. Leonard Teye-Botchway & Mrs. Ronita Teye-Botchway  
 The Julia L. McLaughlin Irrevocable Trust  
 Dr. Ian Steven Udvarhelyi & Mrs. Carol Udvarhelyi  
 Mr. Steve Ward & Mrs. Lori Ward  
 Mr. Gary Weinstein & Mrs. Margot Weinstein

### Landmark Leaders

#### Gifts of \$5,000 and over

Anonymous  
 Brian & Gillian McNamee Foundation  
 Mr. Brian Chisling & Mrs. Pamela Chisling  
 Mr. Moaiz F. Daya & Mrs. Nurjehan Daya  
 Mr. Richard A. Dubbs & Mrs. Anne W. Dubbs  
 Mr. Bennett Fradkin  
 Mr. Michael P. Gaughan  
 Mr. Winston E. Himsworth & Mrs. Anita Himsworth  
 Mr. William B. Lewis & Mrs. Linda Lewis  
 Mr. Brian McNamee & Mrs. Jill McNamee  
 Mr. Stephen H. Sack '92 & Mrs. Karen Sack

Mr. Dan M. Schuppan & Mrs. Susan S. Schuppan  
 Mr. Craig Shallcross & Mrs. Deanne Shallcross  
 Mr. Frode Strand-Nielsen & Mrs. Merete Strand-Nielsen  
 Mr. Doug Straub & Mrs. Barbara Straub  
 TD Bank  
 Mr. Dan Wolf & Mrs. Elly Wolf  
 Mr. John L. Wright & Mrs. Jodene Wright

### Frost Club

#### Gifts of \$2,500 and over

Aerie Consulting  
 Mr. Raymond Arenson  
 Mr. David J. Burney & Ms. Jennifer N. Nobis  
 Mr. Richard Chrisman & Mrs. Cindy Chrisman  
 Mr. Dave Cronberger & Mrs. Mary Cronberger  
 Dr. Peter A. Eden & Mrs. Joanne Eden  
 Ms. Mara L. Faden  
 GovConnection, Inc.  
 Mr. James M. Grant & Mrs. Nicola S. Grant  
 Health & Human Service Charities of America  
 Mr. Elliott Hearst & Mrs. Gail Hearst  
 Mr. Scott K. Hunt & Mrs. Barbara Hunt  
 John D. Picotte Family Foundation  
 Jonathan A. French Charitable Trust  
 Mr. Mark Lopez & Mrs. Leslie Lopez  
 Mr. Richard E. Lounsbury & Mrs. Shelley H. Lounsbury  
 Ms. Karen E. McCulley  
 Mr. Robert W. Munley '89 & Mrs. Lora A. Munley  
 Mrs. Belle O'Brien & Mr. Morgan E. O'Brien  
 Mr. John D. Picotte '94 & Meghan D. Picotte  
 Piper Jaffray & Co.  
 Mr. Laurence Pulgram & Ms. Kathleen Murray  
 Mr. Benjamin Reyes & Mrs. Silma Reyes  
 Ms. Sarah J. Schiermeyer  
 Mrs. Melinda Scrivner  
 The Richards Group

### Colonnade Club

#### Gifts of \$1,000 and over

Mr. William T. Adams & Ms. Ann Saeger  
 Anonymous (2)  
 Dr. Mitchell Berger & Mrs. Cindi Berger  
 Dr. Monika A. Bissell  
 Mr. Arthur Brandolph & Ms. Fran Visco  
 Mr. Dale S. Busch & Mr. Pat Busch  
 Chartwells  
 Cisco Matching Gift Program  
 Ms. Libby Cooper  
 Mr. Jeffrey Dankberg  
 Davis Educational Foundation  
 Mr. Mark A. Derby & Mrs. Shelley P. Derby  
 Mr. Robert E. Dillon  
 Mr. James S. Eastham & Mrs. Catherine M. Eastham  
 Dr. Rick Ehrlich & Mrs. Pam Ehrlich  
 Mr. David M. Eisen & Ms. Gayle M. Spear  
 Eppenstein Family Charitable Fund  
 Mr. Theodore G. Eppenstein &  
     Mrs. Madelaine Eppenstein  
 Mr. Mark Esposito & Mrs. Gina Esposito  
 Dr. David Evans & Mrs. Rita Evans  
 Mr. Daniel M. Fitzpatrick & Mrs. Helen Fitzpatrick  
 Mr. Douglas M. Fleming & Mrs. Sarah R. Fleming  
 Mr. Ray Foote & Ms. Deirdre Corcoran  
 Mr. Philip Fraher & Mrs. Kim Fraher  
 Mr. Ted Giuliano & Mrs. Hilary Giuliano  
 Mr. Stan Goldberg & Ms. Bonnie D. Frankl  
 Mr. David Hartzell & Mrs. Christine Hartzell  
 Mr. Peter S. Hearst & Mrs. Barbara B. Hearst  
 Mrs. Denise Higgins  
 Mr. Mark E. Higgins  
 Mr. Richard Higgins  
 Mr. Hein Holtkamp & Mrs. Elisabeth Holtkamp  
 Mr. David C. Hull & Mrs. Stormy Hull  
 Interstate Electrical Services Corporation  
 James E. & Constance L. Bell Foundation

Mr. John Kandravy  
 Mr. John F. Kelly & Mrs. Patrice M. Kelly  
 Mr. Robert M. Kern  
 Ms. Ruth Koizim  
 Mrs. Mary Kukovich & Mr. Barry D. Kukovich  
 Mr. Dilip S. Kumar  
 Mr. Robert Kuperman & Ms. Colette Chestnut  
 Leader Distribution Systems, Inc.  
 Lewis Family Foundation  
 Mr. Michael E. Luciani  
 Mr. Jon A. MacClaren & Mr. Christopher Sink  
 Mr. Daniel MacEachron & Dr. Devon MacEachron  
 Mr. James Meinen & Mrs. Julie Meinen  
 Mr. David J. Meskell & Mrs. Suzette Meskell  
 Mr. Robert Moser & Mrs. Constance B. Moser  
 Mr. George A. Needham & Mrs. Ellen Needham  
 Nelnet Business Solutions  
 Mr. David O. Nordby & Mrs. Elaine M. Nordby  
 Mr. Dean Packard & Mrs. Darian Packard  
 Mr. Keith Partington & Mrs. Deb Partington  
 Mr. Richard Parton & Mrs. Carol Parton  
 Mr. Peter A. Picknelly & Mrs. Melissa M. Picknelly  
 R.C. Brayshaw & Company  
 Dr. Maryellen Rancourt  
 Dr. Pola Rosen & Dr. Herman Rosen  
 Mr. Jeffrey Roush & Mrs. Dabney Roush  
 Mr. Jeffrey Salzman & Mrs. Carolyn Salzman  
 Mr. Werner Schmidt & Mrs. Robin Seligman-Schmidt  
 Ms. Katherine Schoonover  
 Mr. Jon S. Schultheis '86 & Mrs. Jenice Schultheis  
 Dr. Frank K. Schweighardt &  
     Mrs. Yvonne M. Schweighardt  
 Mr. Michael Shoemaker & Ms. Una Murray  
 Ms. Ellen Smith  
 Mr. Scott Sommer & Mrs. Karen Sommer  
 Mr. Robert F. Sproull & Mrs. Lee S. Sproull  
 Mr. Craig C. Standen & Mrs. Marcia C. Standen  
 Ms. Suzanne Swanson  
 The Dallas Foundation  
 The Mount Laurel Foundation Inc.  
 The Sommer Family Foundation  
 Ms. Andrea Tolliver '00  
 Ms. Noel Tripp & Mr. Mihai C. Tripp '13  
 Ms. Theodora van Roijen '00  
 Dr. Mary Warren  
 Mrs. Elsa Waxman & Mr. Barry Waxman  
 Mrs. Maureen Wilkens  
 Mr. George Wilson & Mrs. Cynthia Wilson  
 Ms. Susan Witter  
 Mr. Michael R. Young & Ms. Leslie Carroll

## Blue & White Club

### Gifts of \$500 and over

A to Z Communications  
 Anita B. & Howard S. Richmond Foundation, Inc.  
 Anonymous (2)  
 Dr. Manju Banerjee  
 Mr. Richard Barnick & Mrs. Florence Barnick  
 Ms. Corinne Bell  
 Mr. Howard Bender & Mrs. Susan Bender  
 Ms. Kim Bishop  
 Bristol-Meyer Squibbs  
 Mr. Peter Calkins-Hubley & Mrs. Sharon Calkins-Hubley  
 Mr. Randy Clark & Mrs. Cherish Clark  
 Mr. Yonathan Epelbaum & Mrs. Jennifer Epelbaum  
 Mr. Walter H. Fleischer & Mrs. Candace Kovacic-Fleischer  
 Goodenough Rubbish Removal  
 GPI Construction, Inc.  
 Green Mountain Tent Rentals, LLP  
 Ms. Mary E. Griffin  
 Ms. Cynthia Hallenbeck & Mr. Doug Hallenbeck  
 Ms. Jill Hart  
 Ms. Diane Hillmann  
 Dr. Cathrine Keller  
 Mr. Michael Kennealy  
 Mr. Werner Kummerle & Mrs. Sue Kummerle  
 Mr. George M. Kunath & Ms. Kathleen E. Shannon  
 Mr. Herbert Kunstadt  
 Mr. Christopher Lane & Mrs. Susan S. Lane  
 Mr. Robert Lasher & Mrs. Pamela T. Lasher  
 Ms. Carolyn LeBail  
 Ms. Lisa Linden  
 Dr. Samuel Louie & Mrs. Hwei Mei Louie  
 Dr. Adrienne Major  
 Mr. Francois Mallette & Ms. Francoise Brosseau  
 Mr. David B. Manley  
 Mr. P. A. McLane & Mrs. Linda H. McLane  
 Ms. Margo Montgomery  
 Mr. Stephen P. Moschetta '95  
 Mr. Andrew I. Namm & Mrs. Anne Namm  
 The Namm Foundation  
 Mr. Wendel Nicolaus & Mrs. Lissa Nicolaus  
 Mr. Sean O'Reilly  
 Ms. Elaine Pardalos  
 Dr. John F. Patton  
 Ms. Alita Pirkopf  
 Mr. Richard J. Preng & Mrs. Julie Preng  
 Mr. Glenn Reiter & Mrs. Lyn Reiter  
 Mr. Howard S. Richmond  
 Mr. Roger Russell & Mrs. Eileen Russell  
 Ms. Barbara Shapiro  
 Mr. Kyle Skrocki

Mr. David Smarro & Mrs. Jane Smarro  
 Ms. Carol Smith  
 Mr. Robert Smith & Mrs. Patti Smith  
 Mr. Henry K. Snyder  
 Sovernet  
 Mr. Michael Springer & Mrs. Lynn Springer  
 Mr. Christopher M. Stanley '14  
 Mr. Jonathan L. Stanley & Mrs. Deborah M. Stanley  
 Ms. Mary Stoner  
 Mr. Thomas J. Sublewski &  
     Mrs. Elizabeth Lucas Sublewski  
 TSBL Inc. DBA Hill Country Vending Services  
 Mr. Warren Weinstein & Dr. Marie Weinstein  
 Mr. Stephen Wilkens '88  
 Dr. Joseph M. Wilkinson & Mrs. Susan Wilkinson  
 Ms. Mara A. Williams  
 Mr. Gregory Zoidis & Mrs. Susan S. Zoidis

## Aiken Associates

### Gifts of \$250 and over

Alliance Mechanical Inc.  
 Mr. Tom Anderson & Mrs. Gina Anderson  
 Ms. Barbara Aronstein-Black  
 Ms. Mary T. Baldrige  
 Mr. Seth J. Bied '10  
 Ms. Robin S. Black  
 Mr. Peter Bleakley & Ms. Mary B. DeRosa  
 The Boston Foundation  
 Mr. George Bower & Mrs. Aimee Bower  
 Dr. Michelle Bower & Mr. Jeffrey Bower  
 Mr. Larry D. Burrill & Mrs. Joan M. Burrill  
 Mr. Patrick Connelly  
 Ms. Alfrida A. Coombs  
 Mr. Philip S. Derfler & Dr. Linda R. K. Tollefson  
 Mr. Brinkley Dickerson & Mrs. Patricia Dickerson  
 Dinse, Knappe & McAndrew, P.C.  
 Mr. Mark DiPietro  
 Mrs. Anne M. Fein & Mr. Peter F. Fein  
 Flooring Concepts, Inc.  
 Mr. William Flynt & Mrs. Suzanne Flynt  
 Mr. Steven A. Fox & Mrs. Vicki R. Fox  
 Mr. Rene M. Garcia & Mrs. Risa Bramon Garcia  
 Mr. Richard Garzilli & Mrs. Jane Garzilli  
 Ms. Debbie Gassaway-Hayward  
 Mr. Rene Gonzalez & Mrs. Sylvia Villegas  
 Mr. Rene X. Gonzalez '04  
 Mr. Alexander K. Gray '11  
 Mr. Alexander Hadjijyane & Dr. Carylann Hadjijyane  
 Mr. Philip Hansteen '04  
 Mr. David Hasson & Mrs. Nicole Hasson  
 Ms. Linda Hecker  
 Ms. Christina Herbert  
 Mr. James Higgins  
 Mr. William Q. Jeffries & Mrs. Jean Jeffries  
 Ms. Nancy Kaboolian & Mr. Frank G. Hemerlein  
 Ms. Katherine A. Kandravy '89  
 Dr. Lynda J. Katz  
 Ms. Tiffany L. Kerylow  
 Dr. Lynn D. Kramer & Mrs. LaVonne R. Kramer  
 Ms. Jeanne Linnes  
 Loveys Family Charitable Foundation  
 Mr. Mark Lubell '89  
 Mr. Peter W. MacEwen & Ms. Elizabeth T. Rhineland  
 Dr. Peter Martin & Ms. Lynn Freeman  
 Mrs. Sandra Mather  
 Mr. Brian McLaughlin & Mrs. Merily McLaughlin  
 Mr. Franklin B. Mead & Mrs. Penny Mead  
 Mr. Steven L. Meltzer & Mrs. Harriet V. Meltzer  
 Dr. Donald Mickal & Mrs. Bonnie Mickal  
 Mr. Thomas Moore  
 Mr. Peter Murley & Mrs. Susan Murley  
 Ms. Carol Nardino  
 Osterman Propane, LLC  
 Ms. Margaret T. Patton  
 Pension Works, Inc.  
 Mr. John A. Perkins  
 Flooring Concepts, Inc.  
 Mr. Patrick T. Ramge & Mrs. Christine F. Ramge  
 Mr. Humberto Ramirez  
 Ms. Katherine M. Richardson  
 Mr. Larry Sanderson & Mrs. Julie Sanderson  
 Mr. D. Scott Shaw & Mrs. Nancy E. Shaw  
 Mr. Mike Simpson  
 Mr. Kirt Sorensen  
 Mr. Johnnie Stones  
 Mr. Paul Sullivan & Ms. Roxanne Araim-Sullivan  
 Mr. William R. Sutton '16  
 Ms. Suzanne Swanson  
 The Melanson Co., Inc.  
 Mr. Cecil Ursprung & Mrs. Lana Ursprung  
 Mr. P. Matthew van Roijen '99  
 Dr. James Vander Hooven  
 Mr. Thomas Vanderwiel & Mrs. Bonnie Vanderwiel  
 Dr. James K. Vernon & Mrs. Joan B. Vernon  
 Mr. Gordon Weiner & Mrs. Mary Weiner  
 Ms. Ruth Wilmot  
 Reverend John R. Wilson & Ms. Mary F. Sturm  
 Windham Wines  
 Young Alumni Committee

## Finn's Friends

### Gifts of under \$250

Ms. Angeline Acaín & Ms. Susan Eisenberg  
Agilent Technologies  
Ms. Elizabeth Ahearn '11  
Mr. Mahmood Ahmad & Ms. Mazlina Hussin  
AIG Matching Grants Program  
Mrs. Norma Akamatsu  
Mrs. Judith A. Alden  
Dr. Peg B. Alden  
Mr. Paul J. Alessi & Mrs. Diane K. Alessi  
Ms. Nancy L. Alexander  
Ms. Sarah M. Alley Kammerer '04 & Brian Kammerer  
AmazonSmile Foundation  
Mr. Paul Ames & Mrs. Kathleen Ames  
Ms. Rebecca Ames '14  
AMTEC  
Mr. Connor M. Anderson '12  
Ms. Erica Anderson '12  
Ms. Kimberly J. Anderson-Moreau '92 &  
Mr. Randy Moreau  
Mr. Peter W. Andreas '17  
Mr. William F. Andreas & Mrs. Paulette J. Caron-Andreas  
Mrs. Mallory Anhouse  
Anonymous (7)  
Mr. Michael P. Anthony  
Dr. Elizabeth A. Ardolino  
Ms. Christine Arieta  
Ms. Jenna Austin '11  
Ms. Susan Austin  
Ms. Anne Bagley '99  
Ms. Anne Baldwin  
Ms. Alexandra Barry '88  
Mr. Michael L. Barry  
Mrs. Suzanne D. Barry  
Mr. James Baucom & Mrs. Pam Baucom  
Ms. Meghan Beaton '15  
Mr. William Beattie '92  
Ms. Jeanine Bedard  
Mr. Philip H. Beegle '00 & Ms. Jennifer Brecher '00  
Mrs. Carol A. Behn  
Mr. Bart M. Beier & Mrs. Mary Beier  
Mrs. Karen A. Belcher & Mr. Keith Belcher  
Mr. Jay M. Bender & Mrs. Rita Bender  
Mrs. Kerri E. Bennett Silva '97  
Mr. Scott Benton & Ms. Lisa L. Benton  
Ms. Meghan R. Benzel '11  
Mr. Geoffrey H. Berg & Mrs. Susan Berg  
Mr. Neil Berger  
Ms. Madeline S. Bergstrom  
Ms. Deb Berigow

Mr. Ira Berkowitz & Mrs. Joan Berkowitz  
Mr. Quinn Bernasconi '11  
Mr. James Berns  
Dr. Brian A. Bidlingmeyer & Mrs. Ursula A. Bidlingmeyer  
Mr. Samuel D. T. Bieber '10  
Ms. Alyssa Bingham  
Mr. David M. Binns & Mrs. Elizabeth A. Binns  
Mr. Brian Bird  
Ms. Eleanor R. Bissell '13  
Mr. Christopher L. Blakeburn '16  
Mr. R. D. Blanton & Mrs. Patty P. Blanton  
Mr. William Blezard & Mrs. Lynne Blezard  
Mr. Peter R. Blier & Mrs. Patricia G. Blauner  
Dr. Sidney Block & Mrs. Martha Block  
Blockhouse  
Mr. Alan C. Boarts  
Mr. Brian J. Boehlert '07  
Mrs. Ferne Bork & Mr. Bruce Kahn  
Ms. Virgie Boston  
Ms. Karen Boutelle  
Ms. Sandra B. Bower  
Mr. Christopher S. Boyd & Mrs. Roxanne B. Boyd  
Ms. Lyndsey Boyd  
Dr. Frederick L. Brandt & Dr. Patricia H. Brandt  
Mr. William J. Braunlich  
Mr. Christian Breed '01  
Mr. Todd Brock '15  
Ms. Nevada Bromley  
Mr. Bob Bronico & Mrs. Sue Bronico  
Mrs. Cindy Brown  
Ms. Rachel M. Brown '15  
Mr. Scott E. Brown '01  
Ms. Sheila K. Brown '07  
Mr. Daniel Brutlag '12  
Mr. Richard Bryck  
Mr. Geoffrey Burgess & Ms. Karen Kametzky  
Mr. David S. Burnett & Mrs. Linda M. Burnett  
Ms. Liza Burns  
Ms. Margaret Burroughs  
Mr. John M. Burrows & Ms. Cathie M. Mannion  
Mr. Tim Buschur  
Mr. Nathaniel Campbell '99 & Mrs. Jennifer Campbell  
Mr. Jesse Carris '02  
Ms. Fay N. Carroll '16  
Mr. Francis M. Carroll & Ms. Margaret A. Granok  
Mr. Connor L. Casagrande '15  
Mr. Robert A. Casagrande & Jane Casagrande  
Mr. David Cassidy & Mrs. Claire Cassidy  
Mr. Giulio Cataldo  
Ms. Melanie Cataldo  
Mr. Eric J. Catozzi '10

Mr. Andrew F. Caughey & Mrs. Shelly J. Neitzel  
Ms. Ashlee L. Charette '16  
Dr. Edward B. Cheung & Mrs. Agnes Cheung  
Mr. Aaron Childs '99  
Ms. Ashley A. Childs '04  
Mr. Torrence V. Chrisman '11  
Ms. JonnaLee S. Christiansen '13  
Mr. George Clarke & Mrs. Alexe Clarke  
Mr. James Clements '00  
Dr. John Coco  
Mr. James Coffin '99  
Mr. Arnold Cohen & Mrs. Barbara Cohen  
Mr. Brian Cohen  
Mr. Norman Cohen & Mrs. Linda Cohen  
Mr. Steve Cohn & Ms. Deborah Wolen  
Mr. Edward G. Cole  
Dr. Kimberly Coleman  
Mr. Thomas J. Colgan & Mrs. Claudia A. Colgan  
Mr. Harry Collamore  
Ms. Mirabai E. E. Collamore '09  
Mr. Fred L. Comfort & Mrs. Mary Jane Comfort  
Ms. Genevieve C. Conradi '10  
Mr. David Cooke & Mrs. Pamela Cooke  
Mr. Nathan T. Corain '15  
Mr. Al Cordasco & Mrs. Amy Cordasco  
Mr. Samuel Cotter '12  
Ms. Lindsay Cox  
Mr. Robert Cox & Ms. Ann Hartenstein  
Dr. William G. Crary & Mrs. Mary Crary  
Ms. Kathryn M. Creales '16  
Mr. Nicholas K. Creed '09  
Mr. Damien Cregeau '93 & Dr. Pamela Hall  
Ms. Nathalie C. Crocker & Mr. Dave Mulholland  
Ms. Alyssa Crockett '01  
Mr. James R. Cronberger '11  
Ms. Ashley R. Cronin '18  
Mr. John R. Crook & Mrs. Miriam F. Crook  
CSC Services  
Mr. Phillip J. Culotta & Mrs. Frances Y. Culotta  
Mr. Frank Cummings & Ms. Laura Young  
Ms. Kyleigh Dachos '05  
Dr. Ibrahim Dahlstrom-Hakki  
Ms. Kathy D'Alessio  
Ms. Karen M. Damian  
Mr. Ron Dantin '94  
Ms. Avital S. Davda '12  
Mr. Roger Davis & Ms. Julia Brickell  
Ms. Victoria E. DeAngelis '15  
Mr. John Dellose & Mrs. Caroline Dellose  
Mr. Robert Dembia  
Ms. Rachel Y. Deng '14

Dr. Stanley Depman & Mrs. Diane Depman  
Derrig Excavating  
Mr. Jaime R. Desper '15  
Mr. Jean-Pierre Diels & Mrs. Kristina Gade-Diels  
Mr. Matthew A. Doherty & Mrs. Karen Doherty  
Ms. Marina Dominijanni '12  
Mr. Andrew Donahue  
Mr. Richard P. Donovan & Mrs. Paula Donovan  
Down Under Subs  
Ms. Sarah Downing  
D R Consultants & Designers, LLC  
Ms. Emily F. Drnec '14  
Ms. Jennifer DuFault  
Ms. Sarah Duffy '13  
Mr. Peter R. Duggan  
Ms. Janie L. Duncan  
Mr. Timothy Dunham & Mrs. Debra B. Dunham  
Mr. Andrew S. Durham '06  
Ms. Tiffany Dyer  
Ms. Cheryl Dymont  
Mr. Robert J. Egan & Mrs. Gracie Egan  
Ms. Echaimae El Bazi Bentz '10  
Mr. Kenneth Elkind '87  
Mr. Charles Engel & Mrs. Deborah Engel  
Environmental Compliance Services, Inc.  
Mr. William Epifanio '16  
Ms. Caroline Evans '98  
Dr. Robert L. Evans & Mrs. Cheryl C. Evans  
Ms. Mary Farnsworth  
Ms. Muryah E. Farrell '11  
Ms. Caitlin M. Fash '17  
Mrs. Lynne Feal-Staub  
Ms. Jill M. Feder '17  
Mr. Andrew Feinberg '92  
Mr. Allan F. Finlay  
First Choice Communications, Inc  
Mr. Jules Fishelman '92  
Mr. Abraham S. Fisher & Ms. Colleen Humphreys  
Mr. Jeffrey Fisher & Mrs. Anne Fisher  
Ms. Rebecca A. Fisher '13  
Mr. Andrew P. Fiteni '06  
Mr. William S. Fitzpatrick '11  
Mr. Ethan Fleming '04  
Mr. Chris Flibotte  
Ms. Sandra Florstedt  
Ms. Katherine Forster '99  
Ms. Cathy B. Fox  
Ms. Sara Fradkin '15  
Mr. Justin H. G. Frankl '15



**RACHEL BROWN AA '14, BA '16**

"I donate because everyone deserves the ability to achieve their own academic success. I want to help ensure that someone else is able to reach their own potential and obtain the skills that Landmark College has to offer."

Mr. Edward H. Fraser '16  
 Mr. James W. Freeman & Mrs. Pamela J. Freeman  
 Ms. Megan M. Freeman '16  
 Ms. Nancy Freeman  
 Ms. Emily D. Freling '08  
 Ms. Rachel Friedman '15  
 Ms. Lynn Elise Friend  
 Ms. Susan R. Frishberg  
 Mr. Meyer Frucher & Mrs. Florence Frucher  
 Mr. Blane T. Fujiwara & Ms. Elizabeth Ann R. Ishii  
 Mr. Scott H. Fujiwara '15  
 Ms. Jean C. Fulton  
 Dr. John Gallagher & Mrs. Therese Gallagher  
 Dr. Gregory J. Gallivan & Mrs. Helen K. Gallivan  
 Mr. Bradley Gardini '12  
 Mr. Robert F. Gebel & Ms. Dierdre L. Kugelmeyer  
 Ms. Dorothea S. Gelb '11  
 Mr. Michael Gershon & Mrs. Sharon Gershon  
 Mr. Mark Gilman '03  
 Mr. Ryan Gleason '16  
 Ms. Sara L. Glennon  
 Mr. Stephen Glover  
 Mr. William C. Glynn & Mrs. Marcia Glynn  
 Mr. Kenneth Gobbo & Mrs. Linda D. Gobbo  
 Mr. Richard W. Goldberg & Ms. Robin E. Black  
 Ms. Emily M. Gonzales '18  
 Mr. Milton Gonzales & Mrs. Margaret Gonzales  
 Mr. Ken Goode & Mrs. Kathie Goode

Mr. David Goodrich & Mrs. Donna Marie Goodrich  
 Ms. Susan Grabowski  
 Ms. Lindsay C. Gravina '10  
 Mr. Michael Green '99  
 Mr. Emil J. Greenberg & Mrs. Susan Greenberg  
 Ms. Laura A. Greengold '11  
 Ms. Laura T. Greenly '12  
 Mr. James Griffin & Mrs. Nancy Griffin  
 Mrs. Teresa E. Griffin  
 Mr. Mark Gross & Ms. Julie Raskin  
 Ms. Erica M. Gruen  
 Mr. Paul G. Gustafson & Mrs. Karen Gustafson  
 Mr. Jason B. Guyan '97  
 Mr. David Haarman & Mrs. Juliann Haarman  
 Mr. Tyler A. Haarman '16  
 Mr. Kevin R. Hackett & Mrs. Consueto Hackett  
 Dr. William G. Hagar & Mrs. Dorothy Hagar  
 Ms. Gail Haldeman & Mr. Mark Sims  
 Mr. Sean R. Halnon '14  
 Ms. Roxanne Hamilton  
 Ms. Charlene Hamrah  
 Ms. Leslie Hanafin  
 Mrs. Arnell Hanley  
 Mr. John T. Hardisty & Mrs. Merrily Hardisty  
 Mr. Lance Harlow  
 Ms. Lila M. Harmon '15  
 Ms. Anna M. Harris '08  
 Dr. Howard D. Harrison & Dr. Elizabeth Burns  
 Mr. Peter Harrison '87  
 Ms. Brianna R. Hartssock '10  
 Ms. Victoria L. Hartzell '17  
 Mr. Geoffrey S. Hatchett '12  
 Mr. Michael Hauser & Mrs. Susan Hauser  
 Mr. John J. Hayes '14  
 Ms. Michaela E. Hearst '14  
 Mr. Lars Helgeson  
 Mr. Christopher Heller '14  
 Ms. Barbara Hendricks  
 Ms. Sarah Hensley-Rawles '01  
 Ms. Nancy B. Herron  
 Mrs. Laura Hewitt  
 Mr. John M. Higgins & Mrs. Mary N. Higgins  
 Mr. Kevin J. Hillburn '12  
 Mrs. Jill Hinckley  
 Mr. Thomas Hinckley  
 Mr. Kiernan W. S. Hite  
 Dr. Gordon R. Hodas & Mrs. Barbara Hodas  
 Dr. William A. Hodson  
 Ms. Laura S. Holgate  
 Ms. Sarah Holmes '11

Mr. Richard H. Holte & Mrs. Donna L. Holte  
 Mr. Daniel Holtzman & Mrs. Arlene Holtzman  
 Mr. Jarrett Hood  
 The Hotel Pharmacy, Inc.  
 Mr. Idonas Hughes  
 Mr. Thomas Huizenga & Mrs. Ruth Huizenga  
 Mr. Austin Hunt '12  
 Mr. Michael Hunter & Ms. Laura Cashion  
 Dr. Jordan Hupert & Mrs. Leah Hupert  
 Mr. Michael Hutcheson & Mrs. Cynthia Hutcheson  
 Mrs. Virginia Irish & Mr. Jerry Irish  
 Ms. Lena Jahn  
 Mr. Anthony Janiuk & Mrs. Delores Janiuk  
 Ms. Kathryn A. A. Janiuk '15  
 Mr. Clark L. Johnson  
 Mr. Erik C. Johnson '06  
 Ms. Marianne Johnson & Mr. Doug Libby  
 Mr. Paul L. Johnson & Mrs. Mary C. Johnson  
 Mr. Stephen B. H. Jones '16  
 Ms. Kimberly Judd & Mr. Brant Judd  
 Ms. Melody G. Kabbai '16  
 Mr. Bruce Kahn & Mrs. Ferne Bork  
 Mr. J. G. Kaiser & Mrs. Cynthia D. Kaiser  
 Mr. Beau Kallio '99  
 Ms. Christine L. Kane & Ms. Marianne Gerard  
 Mr. Samuel C. Kane-Gerard '16  
 Mr. Martin M. Kaplan & Ms. Pamela Gensler  
 Ms. Kathryn M. Karmen  
 Katy's Great Food LLC  
 Mr. Joshua Katz '99  
 Ms. Mandy Katz '15  
 Ms. Melanie Keiser  
 Mr. John F. Kelly '06  
 Mr. Thomas F. Kelly & Mrs. Trish Kelly  
 Mr. Wade Kemp  
 Ms. Kimberly Kempf  
 Ms. Vanessa Kennedy '09  
 Mr. Michael Kenyon, Jr. '17  
 Dr. Linda Kerr  
 Mr. Zeus Kerravala & Mrs. Christine Kerravala  
 Ms. Laurie A. Kimble  
 Mr. Ty J. Kimble Padula  
 Mr. Mark Kindall & Mrs. Clare Kindall  
 Mr. Jonathan D. King & Ms. Kathleen M. Mullally  
 Mr. John Kipp  
 Mr. Frank A. Klucken & Mrs. Joyce Klucken  
 Kona Ice of New Hampshire  
 Mr. Thomas Konrad & Mrs. Julie Konrad  
 Ms. Karen M. Kopischke  
 Mr. John Kosakowski

Mr. Thomas Kosiba  
 Mr. Theodore Kotzin & Mrs. Lynn Kotzin  
 Mr. Willem Koulman & Ms. Patricia Cox  
 Mr. Edward K. Kovac & Mrs. Lisa B. Kovac  
 Mr. Paul J. Kristof '16  
 Ms. Sarah A. Krumeich '11  
 Dr. Walter H. Kunisch & Mrs. Judith Kunisch  
 Mr. Benjamin B. Lachman '12  
 Mr. Harlan Lachman & Mrs. Linnea Lachman  
 Mrs. Tina LaFlam & Mr. Mark LaFlam  
 Mrs. Genevieve Land '96  
 Dr. Jeanette Landin  
 Mr. Mark A. Lane '96  
 Ms. Lindsey A. Langlais '11  
 Mrs. Jennifer N. Lann & Mr. Christopher K. Lann  
 Ms. Sarah Lasher '09  
 Mr. Patrick D. Lathrop '12  
 Mrs. Lisa Lawrence & Mr. Travis Lawrence  
 Mr. Edward J. Lennon & Mrs. Deborah Lennon  
 Ms. Eve A. Leons  
 Dr. Harry M. Lever & Mrs. Caren L. Lever  
 Mrs. Leslie J. Lewis & Mr. Daniel C. Lewis  
 Mr. Nils Lewis '13  
 Ms. Alexandra Libby '09  
 Mr. Scott Lieberman '04  
 Dr. Carl W. Lindquist & Mrs. Julia Lindquist  
 Mr. Howard M. Lippman & Mrs. Sherri Lippman  
 Ms. Abigail Littlefield  
 Mr. John F. D. Lobrano '11  
 Mr. Parker J. Longo '08  
 Mr. Michael Lord  
 Mr. David Lowden & Mrs. Constance Adcox-Lowden  
 Mr. Garrett B. Lubow '12  
 Ms. Elizabeth Luino '99  
 Mr. Joseph Lydon & Mrs. Tammy Lydon  
 Mr. Robert A. Lyman & Mrs. Beverly Lyman  
 Mr. John K. Lyons & Mrs. Angie Lyons  
 Mr. Steven Lyons & Mrs. Janet Lyons  
 Mr. Stephen J. MacDonald  
 Ms. Sarah MacEachron '12  
 Ms. Mary Jane MacGuire  
 Mr. Michael J. Macho '04  
 Mr. Miro Macho & Mrs. Marian Macho  
 Mr. Shane C. Machover '07  
 Mr. Benjamin W. MacNeil '07  
 Mr. Ronald MacNeil & Mrs. Catherine MacNeil  
 Ms. Wendi S. Mahoney  
 Mr. Joel M. Malina & Mrs. Nancy C. Malina  
 Mr. Russell C. Manchester  
 Mr. Peter Marana & Mrs. Vallon Marana

Mr. Daniel Maravell  
Ms. Julia S. Marshall  
Dr. Robert L. Martuza & Mrs. Jill Martuza  
Mastaler Cleaning Service., Inc.  
Mr. Christopher L. Mathey '04  
Ms. Rebecca Matte  
Mr. William McConnell  
Mr. Stephen E. McGovern '10  
Ms. Lauren T. McGrath '11  
Mr. John McLaughlin  
Ms. Julia L. McLaughlin '17  
Mr. Timothy L. McLaughlin '15  
Mr. Steven H. McPherson & Mrs. Joanne P. McPherson  
Mr. Ladd McQuade  
Mr. Joe Messina & Mrs. Ellen Messina  
Ms. Robin Meyer  
Mr. Christopher J. Migel & Mrs. Cassandra M. Migel  
Mr. Alexander W. Miller '12  
Mr. Ronnie L. Miller & Mrs. Cassandra R. Miller  
Ms. Jacala Mills  
Mr. Jason F. Minns '03  
Mr. Jeffrey P. Minns & Mrs. Joy Minns  
Mr. Andrew R. P. Moore '10  
Mr. James Moore & Ms. Catherine Pfordresher  
Mr. John H. Moore '08  
Mr. Michael R. Moran '09  
Mr. Thomas More & Mrs. Muriel More  
Mr. Phil J. Mott & Mrs. Donna M. Mott  
Mr. Benjamin J. Mowrey '16  
Mr. Dave Mulholland & Ms. Nathalie C. Crocker  
Mr. Connor Murphy '15  
Mr. Stephen Murrell  
Ms. Margaret M. Murtha  
Mr. Walker Mygatt & Mrs. Rachel Mygatt  
Mr. Blain H. Namm '00  
Ms. Abigail Nelson  
Ms. Jessica Nelson  
New Balance Athletic Shoe Corporate Match Program  
Dr. Russell Nichols & Mrs. Helen Nichols  
Ms. Laetitia S. Nijjens '05  
Ms. Marcia M. Nizzari  
Mr. Brandon M. Nogueira '13  
Ms. Patrice Nolan  
Ms. Emily North  
Ms. Celina H. Novella '12  
Mr. Brooks M. O'Brien '03  
Mr. Jonathan Ogle & Mrs. Catherine Ogle  
Ms. Chloe A. O'Hare '16  
Mr. Dave W. O'Hare & Mrs. Yvonne O'Hare  
Mr. John O'Keefe

Dr. Matthew D. O'Leary '13  
Mr. Edward Olmsted & Mrs. Elizabeth Olmsted  
Mr. Jakob P. O'Neal '16  
Mr. Rick J. O'Neal & Mrs. Lynn M. O'Neal  
Mr. Andrew Oppenheimer '92 & Keri Oppenheimer  
Mr. Stephen F. Orluk & Mrs. Jo-Ann M. Orluk  
Mr. Christopher Osgood & Mrs. Mary H. Osgood  
Mr. William B. Osgood & Mrs. Nancy Osgood  
Mrs. Dorothy A. Osterholt & Mr. David M. Osterholt  
Ms. LaTieya L. Palmer '16  
Mr. Luigi J. Palmeri  
Mr. James K. Panza '09  
Mr. Corrado Paramithiotti  
Ms. Carroll Paré  
Ms. Alyssa M. Partington '18  
Mr. Duane K. Pedé & Mrs. Beverly Pedé  
Ms. Olivia W. Penney '15  
Mr. Hector Perez  
Dr. Robert Peters & Mrs. Nessa Peters  
Mr. Stan Piskorski  
PNC Foundation  
Mr. Thomas J. Polson '02  
Ms. Shalynn E. Pommerer '09  
Ms. Kari Post  
Mr. Bradford Price & Mrs. Christine Price  
Ms. Melissa Price '99  
Mr. Kenneth W. Pritikin & Mrs. Trisha Pritikin  
Mr. Nicholas J. Pryer & Mrs. Emily P. Pryer  
Mr. Barry G. Pulsford  
Mr. Ian G. Pulsford '17  
Putney General Store  
Mr. Todd Pykosz  
Mr. Steven D. Querrey '07  
Ms. Jessica D. Rancourt '04  
Ms. Whitney L. Randol '11  
Mr. Jeff Raz & Dr. Sherry B. Sherman  
Ms. Amanda Reed '01  
Mr. Nicolas A. Remels '15  
Ms. Alida Reyes  
Ms. Carol Reynolds  
Dr. Birger E. G. Rhenman & Mrs. Mary J. Rhenman  
Mr. Herbert Richman & Mrs. Barbara Richman  
Mr. Jay Rivera '09  
Mr. Rafael Rivera '93  
Ms. Kimmie Roberts  
Ms. Sara Robinson  
Ms. Joyce E. Rodgers  
Rod's Mobil Station  
Mr. Michael Ronayne  
Mr. John F. Rose

Mr. Irving Rosen  
Ms. Lillian Rosen '15  
Mr. Richard Rosen & Mrs. Margery Rosen  
Mr. Gil Rosenberg  
Dr. Mark Rosenfield & Mrs. Michele P. Rosenfield  
Mr. John Ross  
Ms. Emma Roth '16  
Ms. Anna G. Rubinien  
Mr. Joseph W. Rucker '04  
Ms. Sydney E. Ruff '06  
Mr. Ryan M. Ruffing '16  
Ms. Belinda Russo  
Mr. James Ryan & Mrs. Paula Ryan  
Mr. Alex M. Sacchini '15  
Mr. Louis Salerno & Mrs. Diane Salerno  
Dr. Ira Salom  
Ms. Rozanne Sandy  
Mr. Thomas J. Sansone '13  
Ms. Deborah Saunders  
Savings Bank of Walpole  
Mr. James Savory  
Mr. Steven Schickler & Mrs. Woon Schickler  
Ms. Julia A. Schmidt '16  
Mr. Charlie Schneeweis  
Ms. Virginia Scholl  
Mr. John Schreier & Dr. Jaye Schreier  
Mr. Zachary Schucart  
Mr. Lenard Schwartz & Mrs. Geraldine Schwartz  
Mr. C. D. Scouten '12  
Mr. William Seaver & Mrs. Sherry Seaver  
Mr. Erich M. Seifert '11  
Mr. Miles P. Serman '14  
Mr. James Shabazz  
Ms. Kendall M. Shafiel '11  
Mr. Nicolas Shallcross '14  
Mr. Cyrus Shaoul  
Ms. Cil Shaw-Brewer  
Ms. Lynne C. Shea  
Ms. Alicia D. Sheehan '13  
Ms. Solvegi Shmulsky  
Mr. Austin Shoemaker '17  
Mr. David Short & Mrs. Esther Short  
Ms. Elizabeth M. Shugrue '08  
Ms. Amelia A. Siam '15  
Mr. Edward L. Sievers & Mrs. Kathleen Sievers  
Silicon Valley Community Foundation  
Mr. Guy Simkhay '00  
Mr. David Skau  
Ms. Katrina Skogstad  
Dr. George Smeaton

Mr. Brenton Smith '89  
Mr. Charles C. Smith  
Mr. Jeremiah Smith '93  
Mr. Peter R. Smith & Mrs. Heather L. Smith  
Ms. Sally Smith  
Mr. Timothy K. Smith & Mrs. Penny Smith  
Mr. Richard Sohn & Mrs. Linda S. Sohn  
Dr. William Solomon & Mrs. Marcia Solomon  
Dr. William Solomon & Mrs. Michele Solomon  
Mr. Yefim Somin & Mrs. Sofya Somin  
Ms. Carol Sommariva  
Ms. Meg Spicer  
Ms. Barbara Spivia  
Dr. Paul Sponseller & Mrs. Amy J. Sponseller  
Dr. Bruce Staats & Mrs. Brenda Staats  
Ms. Lucy Stamp  
Ms. Terry Standish  
Mrs. Patricia Stanley & Mr. Steven Stanley  
Mr. Jeffrey Stedman  
Ms. Paige E. Sterling '14  
Ms. Acadia C. Stevens '15  
Mr. Jonathan D. Stevens & Mrs. Teresa Stevens  
Mr. Robert L. Stevens '15  
Ms. Crystal Stillman  
Mr. James Stockwell '14  
Mr. Richard Stodulski '97  
Mr. Bradley J. Stoffolano & Ms. Shan Stoffolano  
Mr. Ed N. Stokes & Mrs. Karen D. Stokes  
Mr. James B. Straus & Ms. Lisa M. Straus  
Mr. Herbert Strauss & Mrs. Lynn Strauss  
Ms. Stephanie V. Strauss '07  
Mr. Grenville G. Sutcliffe & Mrs. Dianne E. Sutcliffe  
Mr. William A. Sutherland '15  
Mr. John Sutton & Mrs. Jennifer Sutton  
Mr. Alexander Taubman '92  
Ms. Barbara A. Taylor & Mr. Richard A. Taylor  
Ms. Jane F. Taylor  
Ms. Christina Tedesco '00  
Ms. Alice M. Thomas  
Mrs. Ann Thomas & Mr. Silas Thomas  
Ms. Jan Thompson  
Mr. Marc J. Thurman '16  
Ms. Victoria Tilson  
Mr. Joseph A. Timpanaro  
Mrs. Crystal Toegel  
Mr. Christopher Toften '93  
Mr. Dan Toomey & Dr. Linda Kerr  
Mr. Tom Trenchard  
Mrs. Jennifer Trzesniowski '03 & Mr. Clint Trzesniowski

Ms. Mika Tsunekage '07  
 Mr. Lee C. Turner & Mrs. Sharon Turner  
 Mr. Michael Tzannes & Mrs. Kelly Tzannes  
 United Way of Greater Rochester  
 United Way of Long Island  
 Mr. Malcolm G. Van Arsdale III  
 Vermont Heating & Ventilating  
 Mr. Angelo Vespa '93  
 Mr. Detmar von Hardenberg '96  
 Mr. Roger P. Wadleigh & Mrs. Carol M. Wadleigh  
 Ms. Kiran Waldbaum '01  
 Mr. William A. Walker & Mrs. Ann H. Walker  
 Ms. Abby Li Ward '15  
 Mr. Allen Ward & Mrs. Geraldine Ward  
 Ms. Cheryl Ward  
 Ms. Laura Warren  
 Ms. Erica Warzybok  
 Mr. William H. Watson  
 Mr. Philip R. Weary  
 Mr. Jesse C. Weaver '11  
 Mr. Justin F. Weaver '10  
 Ms. Christine Weiland '14  
 Ms. Rhea K. Weinstein '16  
 Ms. Gabrielle R. Weiss '06  
 Mrs. Lisa A. Weldon '89 & Mr. John Weldon  
 Dr. Bruce Wellman & Mrs. Cynthia Wellman  
 Wells Fargo Matching Gift Program  
 Ms. Melissa Werthan  
 Ms. Melissa Wetherby  
 Mr. Stephen Wichrowski  
 Mr. Ronald Wilder & Mrs. Barbara Wilder  
 Dr. Tracy Wilkinson '02  
 Ms. Alexandra E. Williams '12  
 Mr. David F. Williams '00  
 Ms. Norma A. Willingham  
 Ms. Deb Wilson  
 Mr. William Wiltsie & Mrs. Karen Wiltsie  
 Ms. Jessica Winslow '12  
 Mr. Victor Winston  
 Mr. Bryan Wood  
 Mr. John Wood & Mrs. Ellen Wood  
 Mr. Byron E. Woodman & Mrs. Ann Woodman  
 Mr. John M. Wright '16  
 Mrs. Margaret Wright & Mr. Arthur Wright  
 WW Building Supply  
 Mr. Charles O. Yoshida & Mrs. Phyllis G. Yoshida  
 Ms. Alana Zaic '01  
 Mr. Jeremy Zeller '11  
 Ms. Rebecca ZuWallack

## Gifts in Memory

**Special gifts to Landmark College were made in loving memory of the following individuals.**

Michelle Emmer-Kincaid '96  
 Robert S. Fay  
 Nicholas Mead '95  
 Ryan D. Menner '11  
 Jenny Parton '97

## Gifts in Honor

**The following individuals/groups were honored by gifts made to Landmark College in their names.**

All LC Faculty  
 Alumni Hall  
 Max Anhouse '14  
 John Bagge  
 Michael Banks Nizzari '13  
 Alexandra Barry '88  
 Timothy W. Barry '02  
 James Baucom (3 gifts)  
 William M. Beattie '92  
 Philip Beegle '00 & Jennifer Brecher Beegle '00  
 Samuel Bieber '10  
 Hillary Black '03  
 Kate Block '96  
 Risa Bramon Garcia  
 David Brandolph '11  
 Robert Brennan '15 & Mindy Brown '16  
 Geoff Burgess  
 Yvette Carter '12  
 Mark Cassidy '17  
 Chris Cheung '18  
 Naima Arielle Cohn '11  
 Kim Coleman  
 Miles Cota '13  
 Eli Cox '13  
 Thomas Grant Cray '93  
 Maria Culotta '17  
 Kathy D'Alessio  
 Loic Diels '02  
 Theresa Dillon '02  
 John Dunham '14  
 Michelle Emmer-Kincaid '96  
 Christopher Fisher '15  
 Benjamin Fleming '15  
 Aaron Frucher '96

Gregory John Gallivan, Jr. '98  
 Sam Garcia '17  
 Christine Gardner '98  
 Jeffrey Glusman '11  
 Anne Goldberg '16  
 Graduation Class of May 2014  
 Bridget Griffin '03  
 Roxanne Hamilton  
 Howard Hasson '08  
 Christine Herbert  
 Elizabeth Higgins '17  
 Jill Hinkley  
 Kiernan Hite '18  
 Joseph Holtzman '19  
 Lizzy Hubbard '16  
 Caroline Hubley '16 & Cameron Hubley '09  
 Teddy Humphreys '17  
 Caroline Ingram '13  
 Robert P. Isherwood  
 Maya Johnson '15  
 Ed Joyce '00  
 Frank Klucken  
 Ben Koizim '13  
 Paul Konrad '07  
 Jennifer Lynn Laird '91  
 Landmark College  
 Landmark Staff for Their Continued Communication  
 and Friendship with Michaela  
 Andre J. LaRue '17  
 Anna Sophie Levy '15  
 Leslie Lewis  
 Robert E. Lewis  
 Ally Libby '09  
 G. Stephen Lindquist '91  
 Abigail Littlefield  
 James Lovering  
 John Lyons '19  
 Michael Macho '04  
 Ben MacNeil '07  
 Patty Mann-Yee  
 Matt Marana '07  
 Chris Martuza '00  
 Eric Matte  
 Rebecca Matte

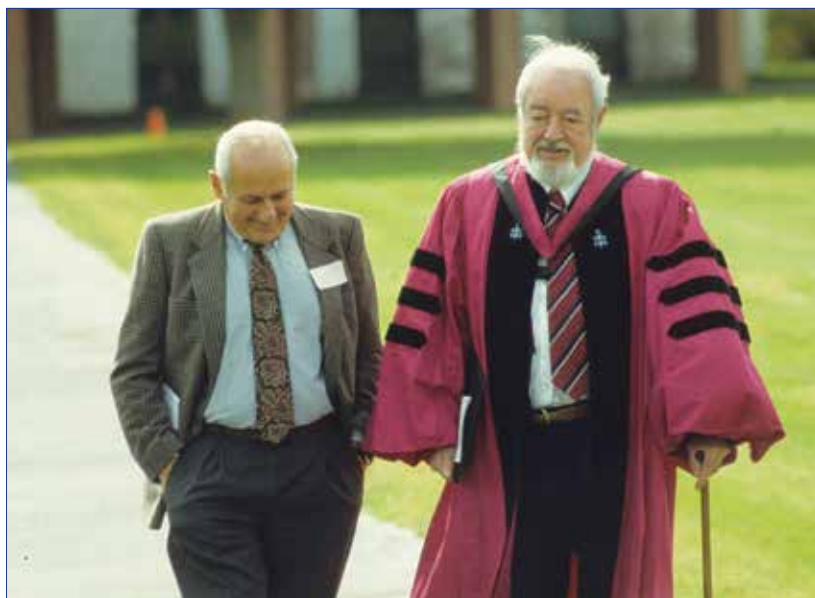
Benjamin McLane '94  
 Julia McLaughlin '16  
 Douglas Meskell '86  
 Erin Mickal '01  
 Jamial J. Miller '15  
 Meg Murtha  
 Carol Nardino  
 Marte Neilsen '07  
 Amy (Goodrich) Nicodemus '98  
 Matt O'Leary '13 & Chris O'Leary '16  
 Carolyn Oliver  
 Jacob Pildes '11  
 Thom Polson '02  
 Joyce Rodgers  
 John Rose  
 Elizabeth (Lizzi) Roush '07  
 Lindsay Russell '00  
 Tyler Saltmarsh '15  
 Caroline Sanderson '17  
 Jennifer (Kayla) Schafer '18  
 Virginia Scholl  
 Faye Schwartzler '05  
 Steven Sievers '00  
 Margaret Solomon '11  
 Benjamin Somin '16  
 Tricia & Steve Stanley  
 Dr. Andrew Stein  
 William Stokes '13  
 Charles & Nan Strauch  
 Amy Sutton '13  
 Will Sutton '16  
 Tom Trenchard  
 Marius Bo Vangsnes '17  
 Theo van Roijen '00  
 Thomas Walker '13  
 Megan L. Warren '17  
 Andrew Weinstein '05  
 James Wellman '07  
 Ann Wheeler  
 Julia A. Wiggin  
 Coach Wood  
 Ellen & John Wood  
 Zach Zoidis '14

We have taken great care to ensure that this Report of Giving is accurate and complete. If we have made an error in recognizing your support, please accept our apologies. To inform us of any correction or preferences for how you would like to be recognized in a future publication, contact the Office of Institutional Advancement at 802-387-6734.



# Introducing The Charles Drake Legacy Society

The Charles Drake Legacy Society recognizes donors who wish to help secure Landmark College's bright future by making gifts through wills or estate plans.



Charles Drake, Ed.D., a Harvard-trained educator and change agent, was the founder of Landmark College. As a college student with dyslexia, Dr. Drake knew firsthand what it meant to struggle with learning disabilities (LD). He also recognized the need for a college devoted to teaching students who learn differently, something that had never been done before.

As Landmark College embarks on its fourth decade as the college of choice for students with LD, The Charles Drake Legacy Society honors his bold vision and leadership. Donors to the Society share the vision with our founder — and his belief in the future.

Through a deferred gift, your generous and thoughtful contribution will help to ensure that LC will continue to serve future generations of students who learn differently with strength and distinction.

## Begin Planning Today

To learn more about how to make a planned gift to Landmark College, contact Ellen Smith, Vice President for Institutional Advancement  
Phone: 802-387-6870 • Email: [ellensmith@landmark.edu](mailto:ellensmith@landmark.edu)  
Website: [landmark.edu/charlesdrakesociety](http://landmark.edu/charlesdrakesociety)

## 2015–16 Annual Fund Facts Worth Noting

The Annual Fund realized and exceeded its goals two years in a row:

### 2014-15

Goal: \$650,000      Achieved: \$700,000

### 2015-16

Goal: \$725,000      Achieved: \$774,000

## 4 Out of 5

More than 80% of all Landmark College faculty and staff contribute to the Annual Fund — among the best participation rates in the country.

## Quarter Million Dollars for Scholarships

Our event to raise scholarship support (see page 2) raised just under \$250,000.

## Support Is Growing!

Our average gift has increased, and our donors are giving more regularly.

## To Make a Gift

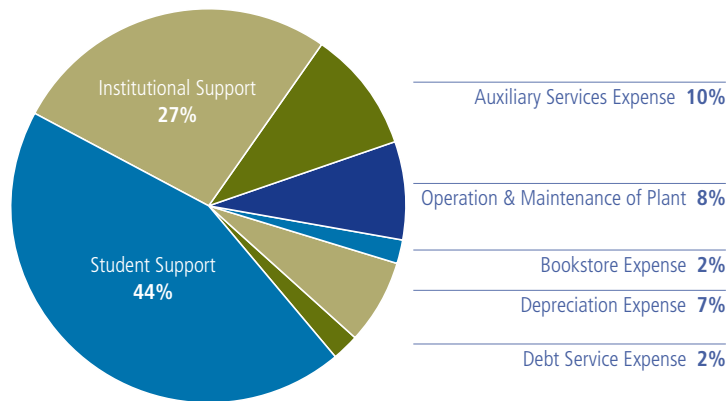
**ONLINE:** Go to [www.landmark.edu](http://www.landmark.edu) and click on “Give” at the top of the page

**BY CHECK:** Make your gift payable to Landmark College and mail to:

Office of Institutional Advancement  
Landmark College  
19 River Road South  
Putney, VT 05346

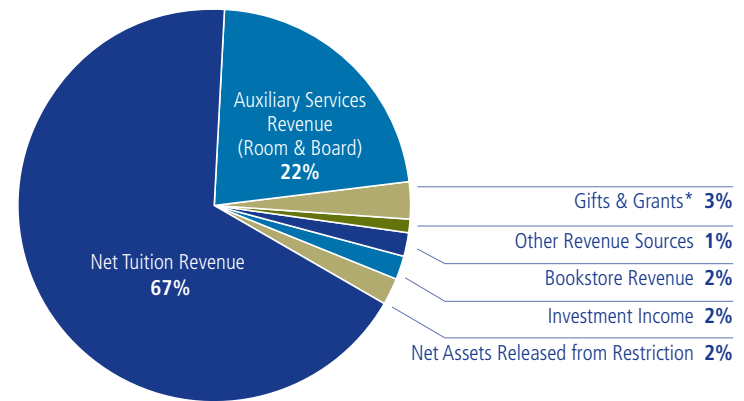
Landmark College  
**2015–16 Financial Summary**

Statement of Unrestricted Activities for the year ending June 30, 2016



**Unrestricted Expenses**

Student Support	\$	11,631,564
Institutional Support	\$	6,959,331
Auxiliary Services Expense	\$	2,730,939
Operation & Maintenance of Plant	\$	2,046,223
Bookstore Expense	\$	520,002
Depreciation Expense	\$	1,850,219
Debt Service Expense	\$	429,011
<b>Total Unrestricted Expenses</b>	<b>\$</b>	<b>26,167,289</b>



**Unrestricted Revenues**

Net Tuition Revenue	\$	16,766,017
Auxiliary Services Revenue (Room & Board)	\$	5,449,911
Gifts & Grants*	\$	817,347
Other Revenue Sources	\$	332,560
Bookstore Revenue	\$	574,135
Investment Income	\$	564,481
Net Assets Released from Restriction	\$	586,780
<b>Total Unrestricted Revenues</b>	<b>\$</b>	<b>25,091,231</b>

\* Does not include temporarily restricted gifts

# Leadership at Landmark College

## Board of Trustees

Robert Lewis, M.A.,  
Chair  
Partner, CKL2 Strategic Partners, LLC

Francis Fairman, M.B.A.,  
Vice Chair  
Head of Public Finance Service,  
Piper Jaffray & Co.

Robert Banta, Esq.  
Immigration Attorney,  
Banta Immigration Law LTD

William Cotter, Esq.  
Retired Owner, Food Manufacturing  
Business

Robin Dahlberg, Esq.  
Documentary Photographer

Peter Eden, Ph.D.  
President, Landmark College

Barbara Epifanio\*  
Stylist, W by Worth

Jane Garzilli, Esq.  
President, Garzilli Mediation

Bretton Himsworth, B.S. '90  
Director, CentralEd

Linda Kaboolian, Ph.D.  
Lecturer, Kennedy School of  
Government,  
Harvard University

John D. Lobrano, Esq.  
Partner, Simpson Thacher  
& Bartlett LLP

Kevin McLaughlin, M.B.A.  
Managing Director, JP Morgan

Jon F. Moran, M.D.  
Professor of Thoracic Surgery,  
East Carolina University (Retired)

Stephen Moschetta, Esq. '95  
Attorney, The Moschetta Law Firm

Robert W. Munley III, Esq. '89  
Attorney, Munley Law

Belle Brooks O'Brien, M.A.  
Trustee, The Morgan and Belle  
O'Brien Foundation

Maryellen Rancourt, Ed.D.  
Grants Administrator, Essex North  
Shore Regional Technical School  
District

Nan Strauch, B.S.  
Trustee, Landmark College

Diane Tarbell  
Chief Administrative Officer,  
Rhodes Associates, Inc.

### EMERITUS MEMBERS

Robert Munley, Esq.  
Partner, Munley Law

John Perkins, Esq.  
Partner (retired),  
Palmer & Dodge

Charles Strauch, B.S.  
Owner, GA Services

### COLLEGE ADMINISTRATION

Peter Eden, Ph.D.  
President

Manju Banerjee, Ph.D.  
Vice President of Educational  
Research and Innovation

Corinne Bell, M.B.A.  
Chief Technology Officer and  
Director of IT

Mark DiPietro, B.A.  
Director of Marketing &  
Communications

Gail Gibson Sheffield, Ph.D.  
Vice President for Academic Affairs\*

Michael Luciani, M.B.A.  
Vice President for Student Affairs

Jon A. MacClaren, M.B.A.  
Vice President for Administration  
and Finance

Adrienne Major, Ph.D.  
Academic Dean

Carol Nardino  
Senior Director of Institutional  
Advancement and Special Assistant  
to the President

Ellen Smith, M.A.  
Vice President for Institutional  
Advancement

James Vander Hooven, Ed.D.  
Vice President for Enrollment  
Management & Dean of Admissions

\* As of August 2016



## Chairman's Letter

Dear Friends,

On behalf of the Board of Trustees of Landmark College, I thank you all for your support of this wonderful institution. The ongoing successes chronicled within these pages bear witness to your impact: We have exceeded our ambitious Annual Fund goals two years in a row; the average gift of our donors continues to increase; we celebrated a very successful New York City gala that raised nearly \$250,000 for our scholarship fund; and we are in the final phases of a successful campaign to build our athletics field. The title of this report says it all: We are an institution that is always moving forward!

Those of us who have experienced Landmark College directly — our students, graduates, parents, faculty, staff, and Board — know firsthand that we are part of a remarkable institution that changes lives every day. Our support represents a “thank you” to the College and a charge for all of us to continue to strengthen the College and to further its mission. We are truly changing the way students learn, educators teach, and the public thinks about education.

The Board is increasingly encouraged by the growing investment, support, and involvement that we are seeing from individuals, foundations, government agencies, and organizations from beyond our College community. Such interest is validation that Landmark College has truly achieved a position of national influence and innovation in higher education. This aspect is particularly true this year, as described throughout this report and shown in the burgeoning numbers of our Honor Roll of Donors.

The learning, pedagogy, and research happening each day at Landmark College is truly amazing. With your ongoing support, we will continue to improve in all these areas and also be able to increase access to a Landmark education for many more students who learn differently.

Sincerely,

Robert E. Lewis  
Chair, Board of Trustees



Office of Institutional Advancement  
19 River Road South  
Putney, Vermont 05346-8517  
802-387-6734

**landmark.edu**

Connect with us on Facebook,  
YouTube, and Twitter.



**STEPHEN WILKENS '88**

"I support Landmark College because it provided me with the tools to continue my education, earn a degree, and find professional success. Landmark College fills an important need — a top-rate education for students who learn differently."

Pictured with Steve are his wife Karen, and daughter Emily. A successful entrepreneur, Steve credits Landmark College with providing the foundation for his career success.



**MEGAN FREEMAN '16**

"I support Landmark College because I want future students to have a chance at success like me. I know that the little bit that I can give now will help LC's future. It makes me feel good to know I have helped the community that has helped me so much."

A December '16 graduate, Megan will be continuing her bachelor's degree at LC. She's known as 'DJ Pink' to listeners of the College's campus station, WLMC Radio.

[Printer to add FSC information here.](#)