

Room & Suite Details

Created by

Dylan Basora-Kennelly,

Resident Assistant

&

Nicole Pacenka,

Assistant Director for Housing Operations/

Resident Dean of Aiken Hall

Updated 2021

Frost

Double Room



- 2 Twin XL Beds
 - Mattress (38" x 80" x 12")
 - Frame— height can be altered (12"-24")
- 2 Desks
 - 21" x 42" x 28"
- 2 Set of Drawers
 - 30" x 26" x 18"
- 2 Desk Two-Position Chairs
 - 16" x 16" x 32"
- 2 Closets
 - 33" x 28" x 70"



Common Room



TV Room



Aiken

Double Room



- 2 Twin XL Beds
 - Mattress (38" x 80" x 12")
 - Frame— height can be altered (12"-24")
- 2 Desks
 - 21" x 42" x 28"
- 1-2 Set of Drawers
 - 30" x 26" x 18"
- 2 Desk Two-Position Chairs
 - 16" x 16" x 32"
- 2 Dressers
 - 33" x 28" x 70"



Double Rooms only: Common Area

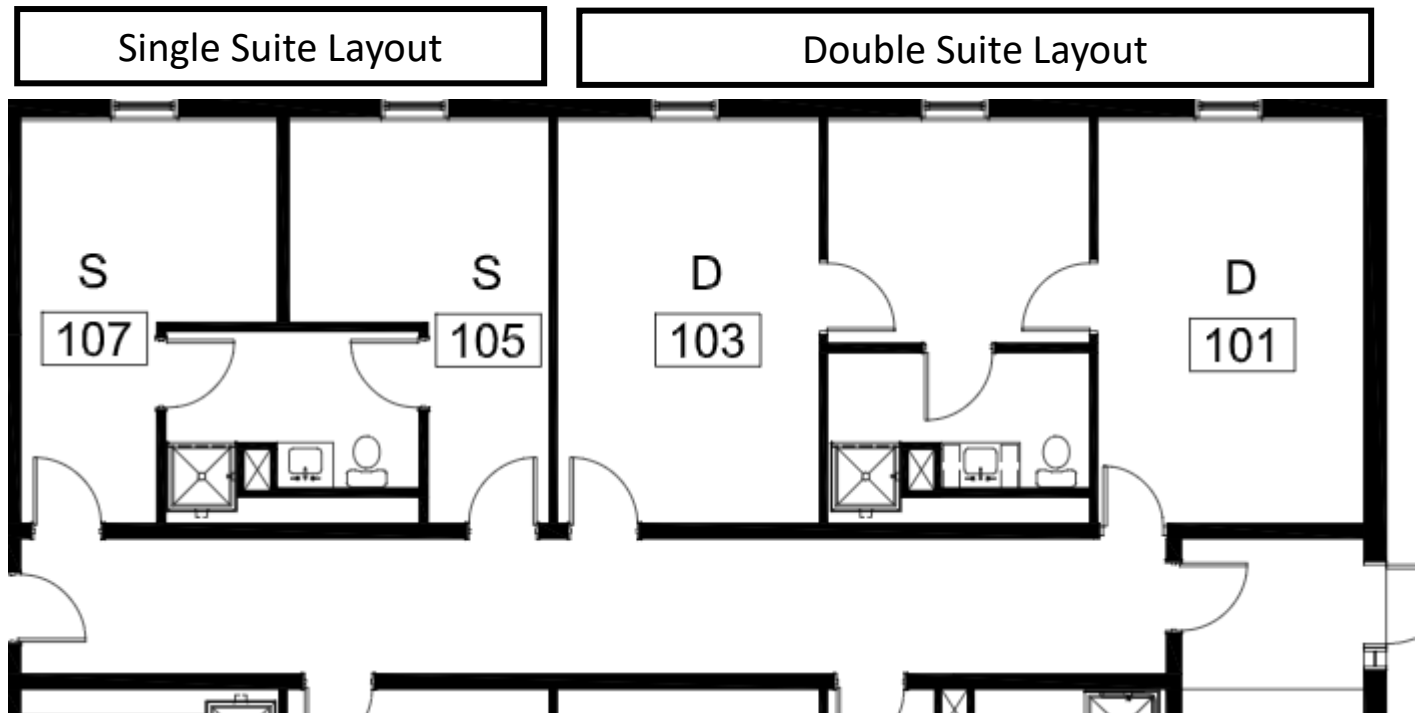


Bathroom



Aiken

Room Dimensions



Single

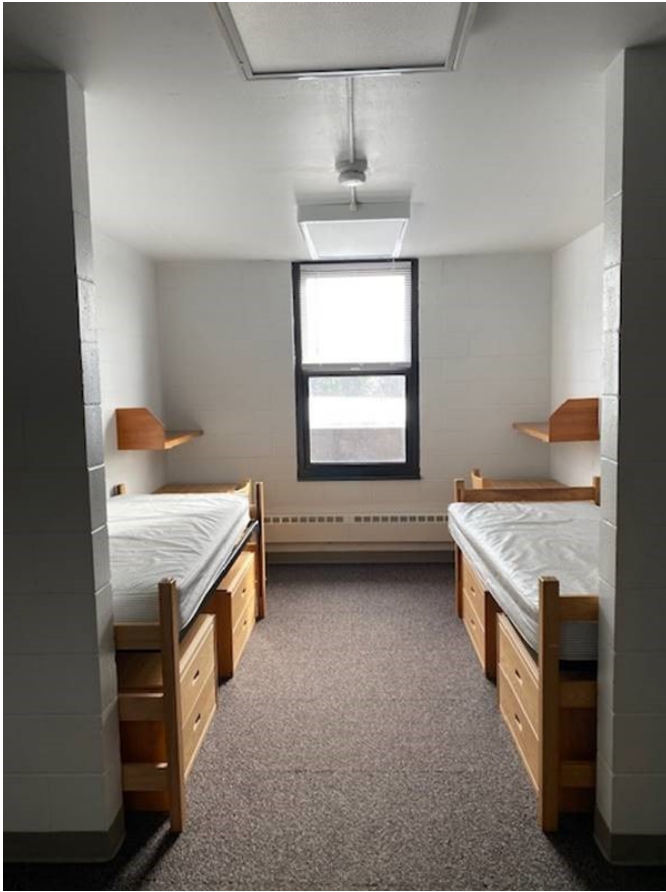
(approximately)
16' x 20' x 14'

Double

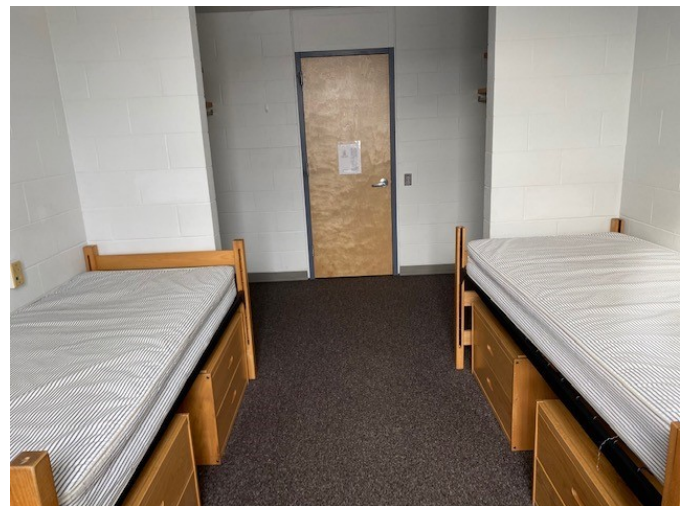
(approximately)
18' x 20' x 14'

Alumni

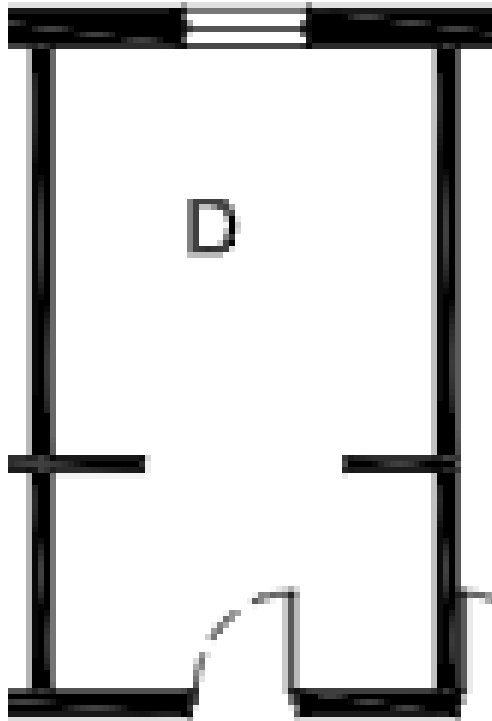
Double Room



- 2 Twin XL Beds
 - Mattress (38" x 80" x 12")
 - Frame— height can be altered (12"-24")
- 2 Desks
 - 21" x 42" x 28"
- 2 Set of Drawers
 - 30" x 26" x 18"
- 2 Desk Two-Position Chairs
 - 16" x 16" x 32"
- 2 Closets
 - 33" x 28" x 70"



Alumni Room Dimensions



Room

(approximately)
16' x 20' x 12'

Stone

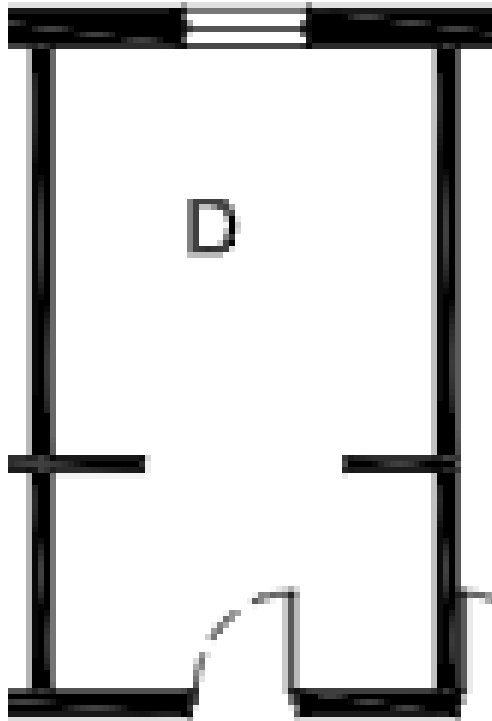
Double room



- 2 Twin XL Beds
 - Mattress (38" x 80" x 12")
 - Frame— height can be altered (12"-24")
- 2 Desks
 - 21" x 42" x 28"
- 2 Set of Drawers
 - 30" x 26" x 18"
- 2 Desk Two-Position Chairs
 - 16" x 16" x 32"
- 2 Closets
 - 33" x 28" x 70"



Stone Room Dimensions



Room

(approximately)
16' x 20' x 12'

Common Room



TV Room



Davis

Double Room

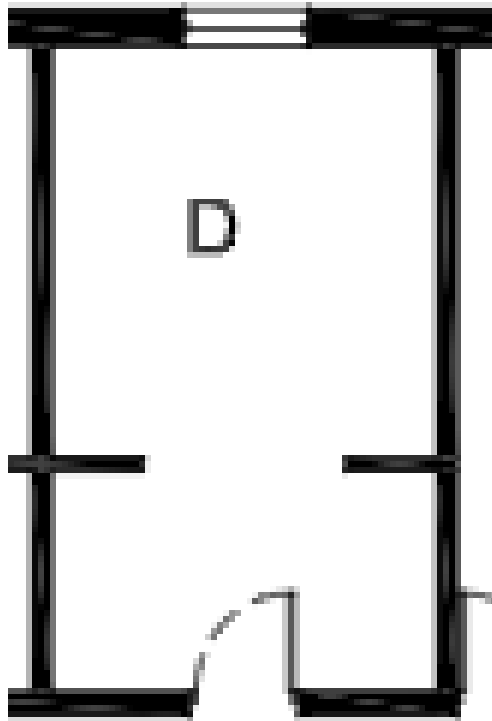


- 2 Twin XL Beds
 - Mattress (38" x 80" x 12")
 - Frame— height can be altered (12"-24")
- 2 Desks
 - 21" x 42" x 28"
- 2 Set of Drawers
 - 30" x 26" x 18"
- 2 Desk Two-Position Chairs
 - 16" x 16" x 32"
- 2 Closet
 - 33" x 28" x 70"



Davis

Room Dimensions



Room

(approximately)
16' x 20' x 12'

Common Room



TV Room



Bridges

Double Room



- 2 Twin XL Beds
 - Mattress (38" x 80" x 12")
 - Frame— height can be altered (12"-24")
- 2 Desks
 - 21" x 42" x 28"
- 2 Set of Drawers
 - 30" x 26" x 18"
- 2 Desk Two-Position Chairs
 - 16" x 16" x 32"
- 2 Closets
 - 33" x 28" x 70"



Single Room

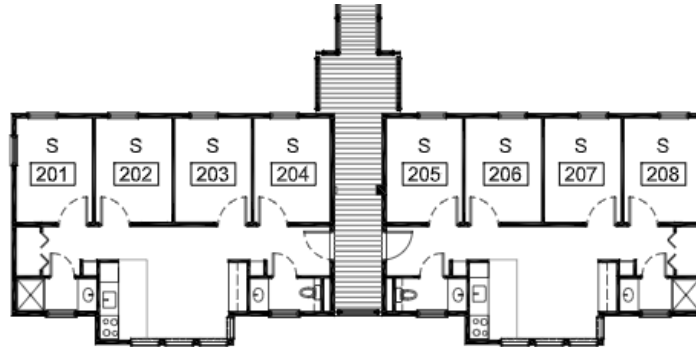


- 1 Twin XL Bed
 - Mattress (38" x 80" x 12")
 - Frame— height can be altered (12"-24")
- 1 Desk
 - 21" x 42" x 28"
- Set of Drawers
 - 30" x 26" x 18"
- Desk Two-Position Chairs
 - 16" x 16" x 32"
- Dressers
 - 33" x 28" x 70"

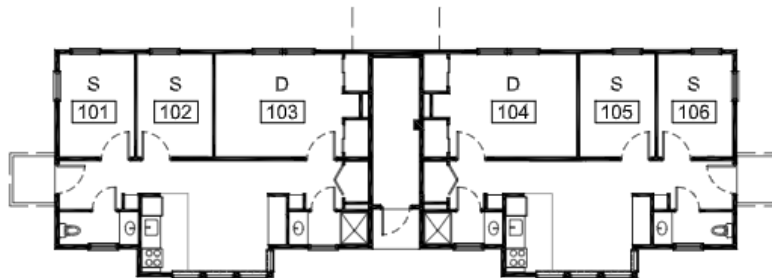
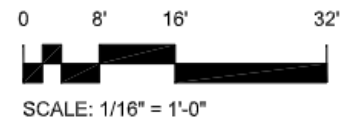


Bridges

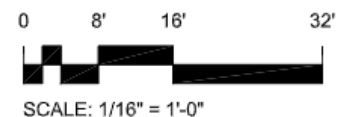
Room Dimensions



UPPER FLOOR PLAN



LOWER FLOOR PLAN



Double (approximately)
16' x 12' x 12'

Single (approximately)
8' x 12' x 12'

Bathrooms



Common Area



Chumley

A & B

Double Room

- 2 Twin XL Beds
 - Mattress (38" x 80" x 12")
 - Frame— height can be altered (12"-24")
- 2 Desks
 - 21" x 42" x 28"
- Set of Drawers
 - 30" x 26" x 18"
- 2 Desk Two-Position Chairs
 - 16" x 16" x 32"
- Closet
 - 33" x 28" x 70"



Single Room

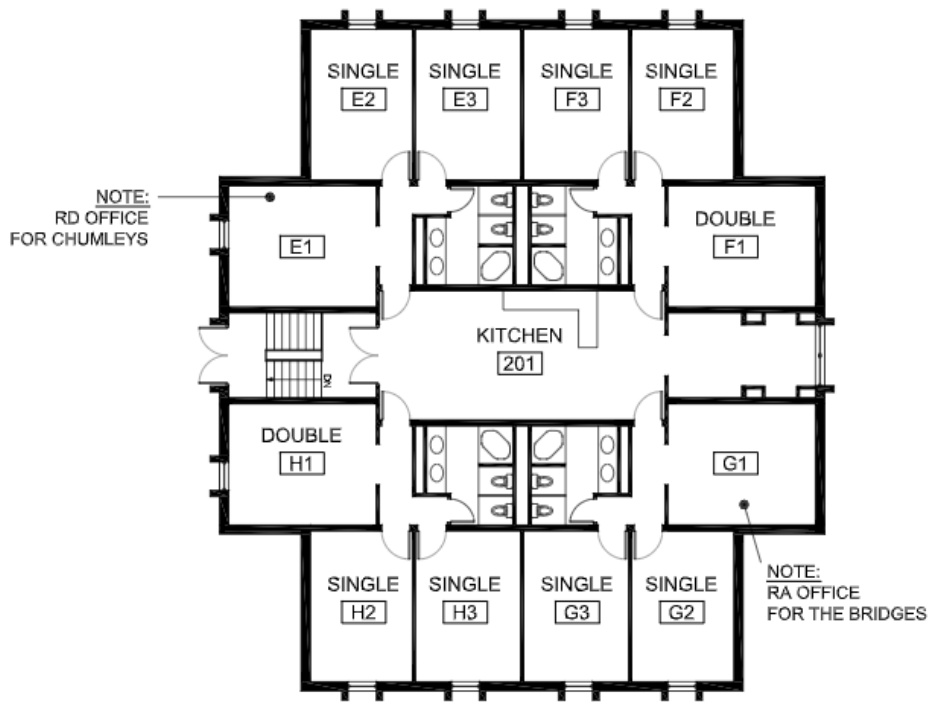
- Twin XL Bed
 - Mattress (38" x 80" x 12")
 - Frame— height can be altered (12"-24")
- Desk
 - 21" x 42" x 28"
- Set of Drawers
 - 30" x 26" x 18"
- Desk Two-Position Chairs
 - 16" x 16" x 32"
- Dressers
 - 33" x 28" x 70"



Chumley

Room Dimensions

(Top Floor)



SECOND FLOOR PLAN

13. CHUMLEY A

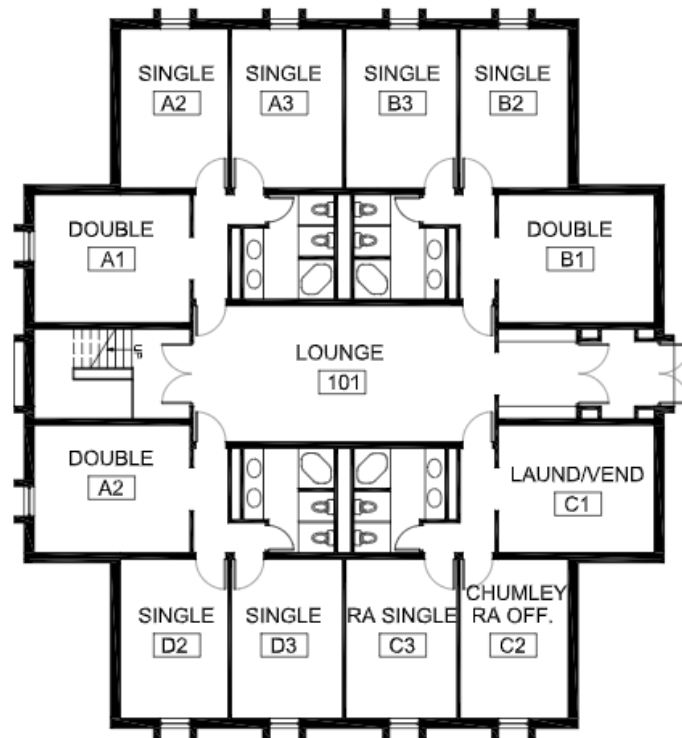
0 16 8
SCALE: 1/16"=1'-0"

Rooms (approximately)
10' x 20' x 12'

Chumley

Room Dimensions

(Bottom Floor)



FIRST FLOOR PLAN

0 16 8
SCALE: 1/16"=1'-0"

Rooms (approximately)
10' x 20' x 12'

Bathroom



Kitchen



Lounge



Questions?

Contact

Housing@landmark.edu