

# LANDMARK COLLEGE MASTER PLAN STUDY

2014

KYU SUNG WOO ARCHITECTS  
OSWALD NAGLER CONSULTANT

# EXISTING CONDITIONS

- **Weak entry image.**
- **The drama of the generous quad is lost because of undefined space functions.**
- **The hill is mostly an obstacle.**
- **3 Campus levels not comfortably connected.**
- **The upper campus feels bare between buildings and at crest of hill.**
- **Campus feels lacking in attractive outdoor gathering spaces.**



# PROPOSED

- **Single entry** is strengthened by parade of trees and parking is clear with foot movement distributing easily.
- **Generous open quad** is framed by contrasting glade of trees at new building. The glade is enriched with a major gathering plaza.
- **Hill** becomes an attraction. The canvas is alive.
- **Comfortable stair systems** connect with clear movement lines and destinations.
- **The upper campus** is enriched with passive and active places.
- **A variety of gathering places**, enriched with art, gives choices that invite interaction or rest.



- **Comfortable stair systems connect with clear movement lines and destinations.**
- **The upper campus is enriched with passive and active places.**
- **A variety of gathering places, enriched with art, gives choices that invite interaction or rest.**



# ENTRY



0' 50' 100' 200'

# ENTRY



- **Single entrance.**
- **Extension of pedestrian paths around the parking area.**
- **Trees create formal entry sequence.**
- **Existing barn removed.**
- **Daniels Garden moved to entry.**



# UNIFY THREE CAMPUS LEVELS



# UNIFY THREE CAMPUS LEVELS



- Preserve existing diagonal path through quad.
- Plant new trees to separate formal field from wooded glade.
- Connect upper campus and lower campus with path.
- Create gathering plaza at the intersection of the paths in the Quad.



# THE CANVAS AND UPPER CAMPUS

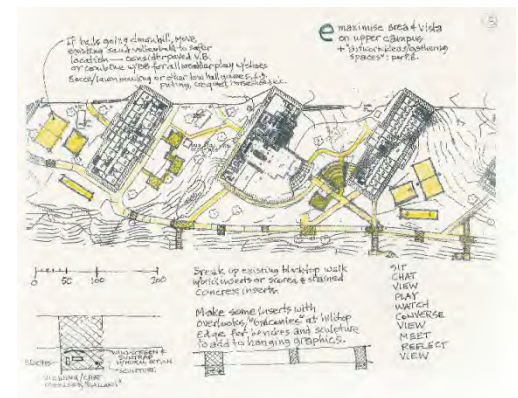


- Organic patterns of wildflowers and Vermont native grasses.
- A celebration of nature colors and a garden setting for sculpture below viewing balconies.
- Crossing steps for direct access to quad or library building.

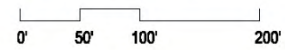
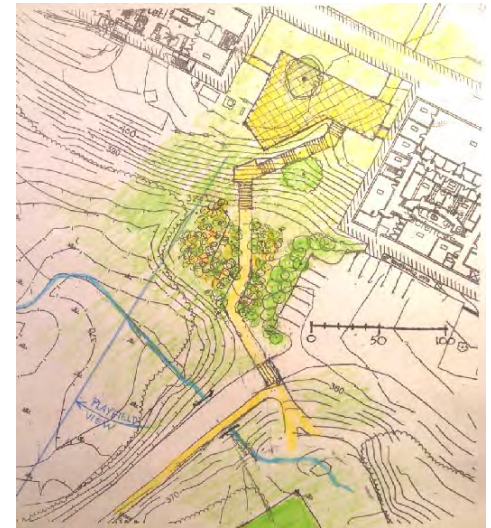
# THE CANVAS AND UPPER CAMPUS



- Small scattered lookout plazas provide views of landscape and campus.
- Various activity nodes scattered between dorms and paths.



# LOWER CAMPUS



## LOWER CAMPUS



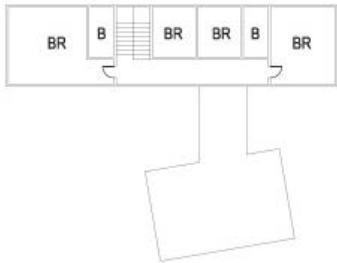
- **Arts plaza next to Fine Arts Building.**
- **New path extending to proposed athletic field.**
- **Reshape parking area and plant new trees.**
- **Plaza overlooks athletic field.**

# PRESIDENT'S HOUSE FEASIBILITY

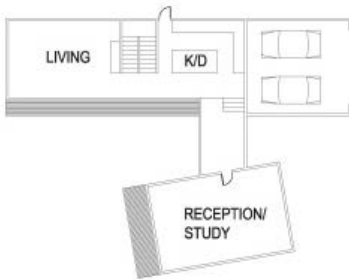


- Location at 26 River Road.
- Tree clearing opens up potential views of the landscape.
- Separation of public and private spaces.
- Orientation maximizes sunlight and views.
- Topography provides minimal site work for existing utilities.

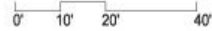
# PRESIDENT'S HOUSE FEASIBILITY



Second Floor

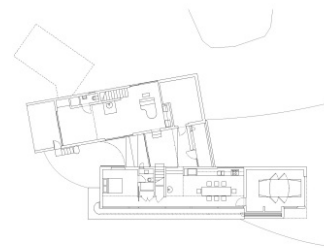
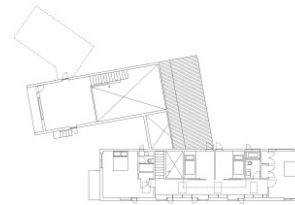


First Floor



- Total area: ~3000sf.
  - Family/Living: 2000sf
  - Reception/Study: 1000sf

Precedent – KSW House, Putney



# SENIOR HOUSING EXPANSION



- Location across 64 River Road gives more privacy.
- Integration into the landscape.
- Capacity of 25 beds. 8000sf.
- Separation from faculty building.

# SENIOR HOUSING EXPANSION



Student Housing, Bennington College, VT





