

Landmark College – FAB Planning Study

IPM™ ESTIMATE

October 5, 2009

Revised February 4, 2010

| | Rate | Services Hour | Cost |
|--|-------|------------------|----------|
| 1.1 Project Discovery and Visioning | | | |
| Project Architect | \$75 | 4 | \$300 |
| VP of MEP Services | \$105 | 2 | \$210 |
| VP of Construction | \$105 | 2 | \$210 |
| Director of Estimating | \$105 | 2 | \$210 |
| Architectural Designer | \$60 | 2 | \$120 |
| Subtotal | | 12 | \$1,050 |
| 1.2 Evaluate Existing Building Conditions | | | |
| Project Architect | \$75 | 16 | \$1,200 |
| Director of Estimating | \$105 | 8 | \$840 |
| VP of MEP Services | \$105 | 16 | \$1,680 |
| Structural Engineer - Consultant | | | \$1,700 |
| Subtotal | | 40 | \$5,420 |
| 1.3 Develop Program Statement | | | |
| Project Architect | \$75 | 16 | \$1,200 |
| VP of MEP Services | \$105 | 8 | \$840 |
| Subtotal | | 24 | \$2,040 |
| 1.4 Develop Conceptual Building Design and Phasing | | | |
| Project Architect | \$75 | 40 | \$3,000 |
| VP of MEP Services | \$105 | 24 | \$2,520 |
| VP of Construction | \$105 | 8 | \$840 |
| Director of Estimating | \$105 | 8 | \$840 |
| Architectural Designer | \$60 | 40 | \$2,400 |
| Structural Engineer - Consultant | | | \$1,400 |
| Subtotal | | 120 | \$11,000 |
| 1.5 Develop Regulatory Review and Code Analysis | | | |
| Project Architect | \$75 | 6 | \$450 |
| VP of MEP Services | \$105 | 4 | \$420 |
| Subtotal | | 10 | \$870 |
| 1.6 Prepare Project Cost Estimate | | | |
| Project Architect | \$75 | 3 | \$225 |
| VP of MEP Services | \$105 | 8 | \$840 |
| VP of Construction | \$105 | 4 | \$420 |
| Director of Estimating | \$105 | 16 | \$1,680 |
| Subtotal | | 31 | \$3,165 |
| 1.7 Prepare Preliminary Project Schedules | | | |
| VP of Construction | \$105 | 6 | \$630 |
| Subtotal | | 6 | \$630 |
| 1.8 Prepare Presentation Images | | | |
| Project Architect | \$75 | 16 | \$1,200 |
| Architectural Designer | \$60 | 24 | \$1,440 |
| Subtotal | | 40 | \$2,640 |
| Subtotal FAB Planning Study Estimate | | | \$26,815 |
| Reimbursable Expense Allowance (printing and overnight delivery) | | | \$300 |
| Total Design and Pre-Construction Services Estimate | | | \$27,115 |

Additional Services

| | | | |
|---|------|----|---------|
| 1.9 Revise Programming and Conceptual Design | | | |
| Architectural Designer | \$60 | 16 | \$960 |
| Subtotal | | 16 | \$960 |
| 1.10 Revise Presentation and Attend Board Meeting | | | |
| Project Architect, preparation | \$75 | 30 | \$2,250 |
| Project Architect, travel/attend | \$75 | 24 | \$1,800 |
| Coordinator | \$35 | 4 | \$140 |
| Architectural Designer | \$60 | 16 | \$960 |
| Subtotal | | 74 | \$5,150 |
| Reimbursable Expenses Allowance- Airfare, hotel, ground transportation, meals | | | \$1,750 |
| Total Design and Pre-Construction Services Estimate | | | \$7,860 |

CONFIDENTIAL

Center for Arts and Sciences (formerly the FAB Renovation Study)
Landmark College

February 4, 2010

ATTENDEES: Landmark College Brent Betit
 Caroline Eisner
 Corrado Paramithiotti
 Shawn Harrington
 Stephen Muller
 Stephen Camp
 Bread Loaf Corporation Jan Becker
 Maynard McLaughlin

MEETING AGENDA: Conceptual Design - Thursday 1:00 pm

1. **Review Meeting Minutes from Jan. 26th mtg.**
Discuss additional program notes from Art Department

2. **Review Conceptual Design –**
Key Concepts:
 - Legible Organization,
 - Create Active Spaces,
 - Faculty Presence,
 - Classroom Quality,
 - Access and 24 hour Use Options.Revised Floor Plans:
3D Images: Exterior Views

3. **Review Preliminary Project Schedule –**

4. **Discuss Next Steps**
Monday Budget Review
Review Conceptual Design Booklet for Houston Trip:
 - Statement of Need
 - Program Summary
 - Code Review
 - Floor Plans
 - Perspective Renderings
 - Total Project Budget
 - Project Schedule

CONFIDENTIAL

BreadLoaf
Architects
Planners
Builders

FAB Renovation

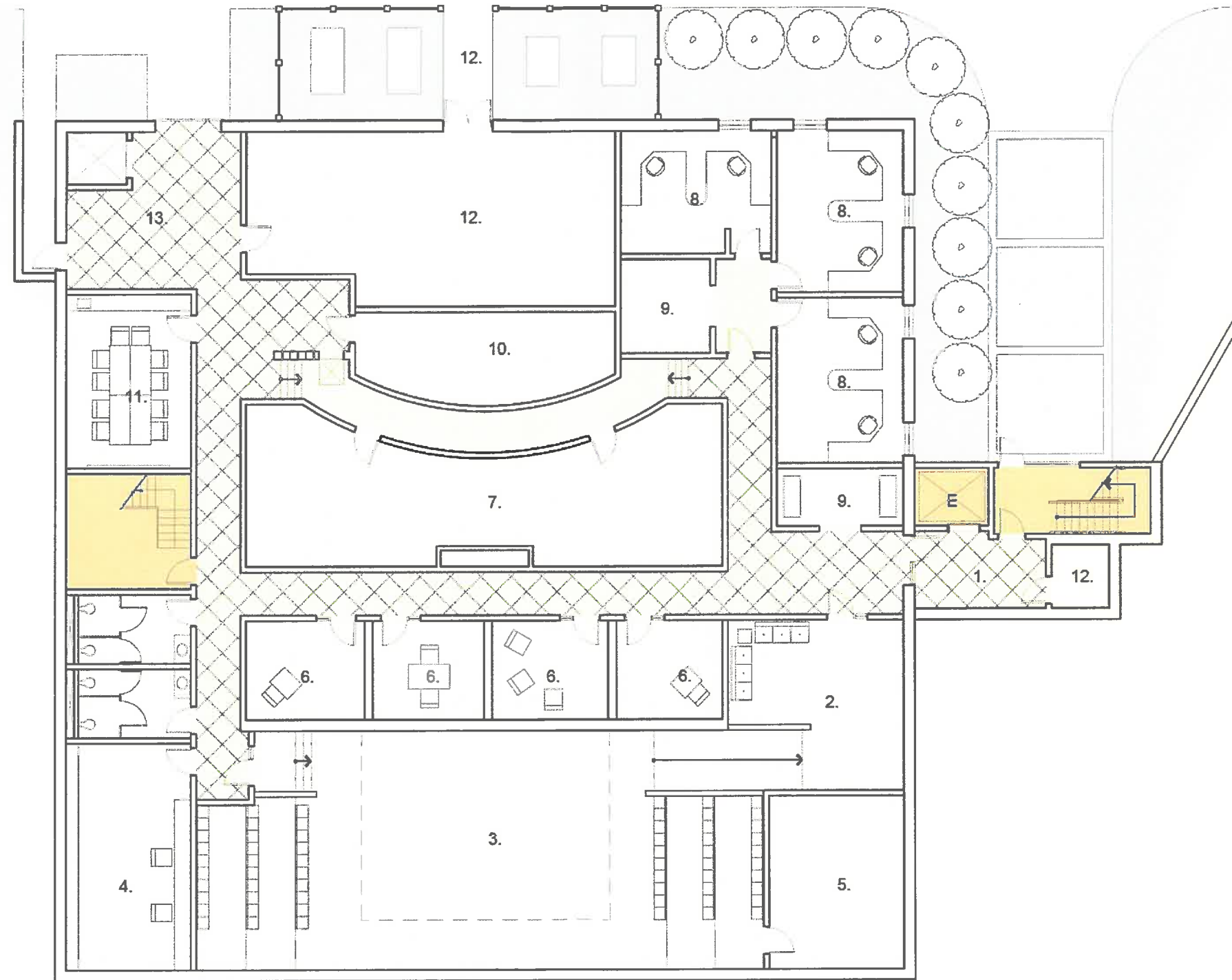
Notes from Art Department

The art department needs the following spaces (studios, digital labs, performance spaces, offices):

- Video and Electronic Music Lab (for Video I and II, Music Recording and Editing, and Electronic Music classes)
- Digital Imaging Lab (for 2-D Design, Digital Photo I and II, Creative Photoshop, and Graphics Design classes)
- Drawing and Painting Studio (for Drawing I and II, Watercolor, and other painting classes)
- Ceramics and Sculpture Studio (for Ceramics I and II, Sculpture, and other 3-D classes)
- Music Room—designed for excellent acoustics and sound-proofing (for Music Theory, Basic Musicianship, Chamber Ensemble, Jazz Ensemble, and Chorus)
- Performance Space for Theater and Dance (for Acting I and II, Dance I, Movement and Learning classes)
- Traditional Photography Darkroom (for B & W Photo I and II and traditional color photo classes)
- Offices for arts faculty (~ 10 office spaces)
- Gallery Space (needs to be securable – locking door or gated, so that we accommodate professional artists' traveling shows)
- All classroom spaces need adequate storage for class supplies and for student lockers for supplies and works-in-progress

Questions / Discussion Topics

- Ideal size of studio classes. At many art schools and small colleges with arts majors the average class size for studio classes is 12 – 16. Colleges with larger studio classes usually have graduate student teaching assistants.
- How extensive is the renovation? Will the building be gutted and redesigned? Are some spaces staying the same (e.g. the Greenhoe Theater)? Will all areas of the building be handicapped accessible? Will the basement be used for classroom space? Will the mold and moisture problems in the basement be rectified? Can the skylight on the 4th floor be reopened to allow natural light into 4th floor classroom spaces?
- Time line?
- PE Classes in the dance studio – can they be moved to the gym or will they still be in FAB?



KEY:

- 1. LOBBY
- 2. STUDIO THEATER LOBBY
- 3. STUDIO THEATER
- 4. RECORDING
- 5. GREEN ROOM
- 6. MUSIC PRACTICE ROOM
- 7. DARK ROOM
- 8. FACULTY OFFICE/SUITE
- 9. STORAGE/SUPPORT
- 10. ORCHESTRA PIT
- 11. CLASSROOM/DRESSING
- 12. BUILDING SERVICE
- 13. SERVICE LOADING

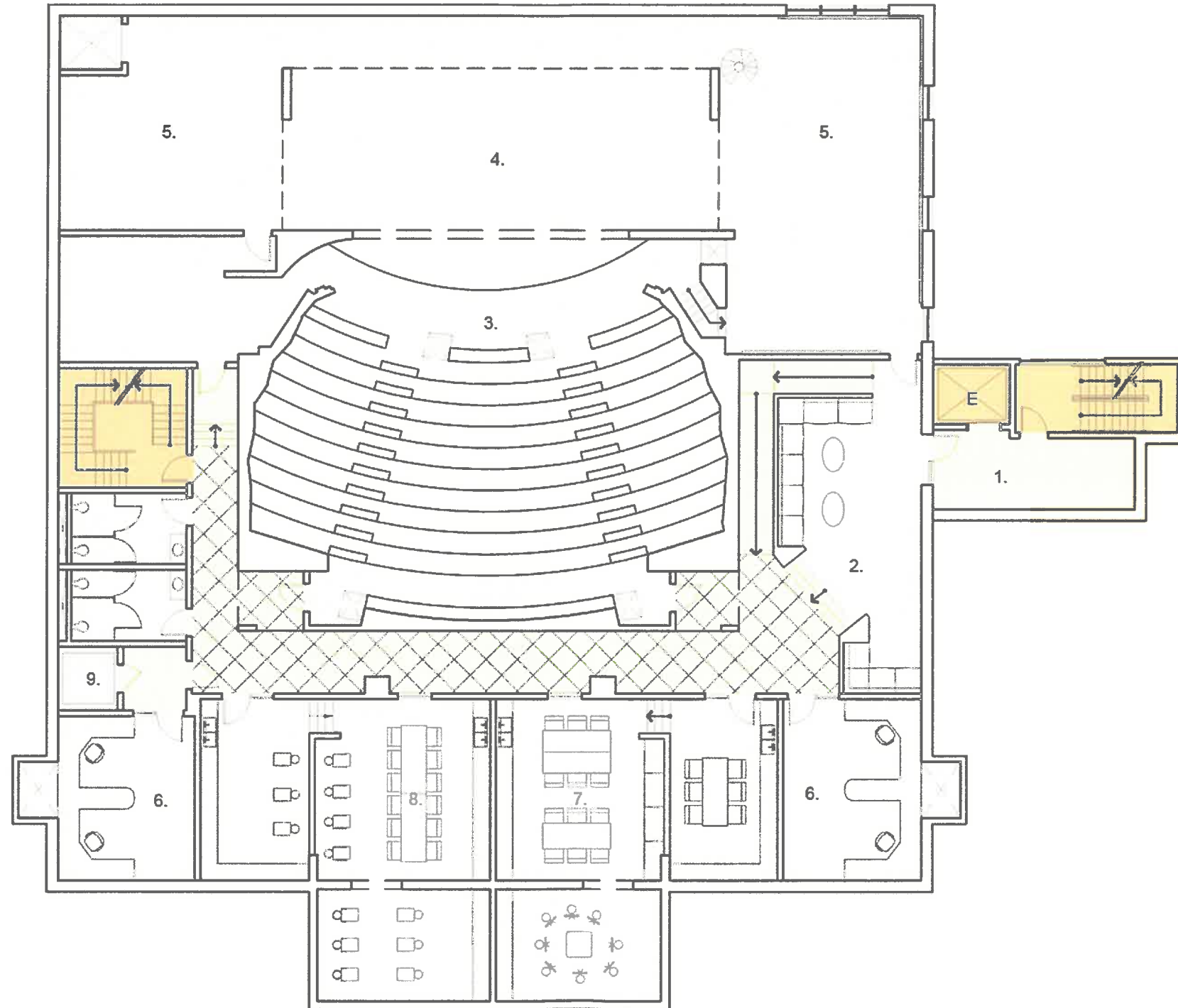
CONFIDENTIAL

First Floor Plan

Landmark College - Center For Arts and Sciences Renovations

SCALE: 1/16" = 1'-0"
02.04.2010

BreadLoaf
Architects
Planners
Interior



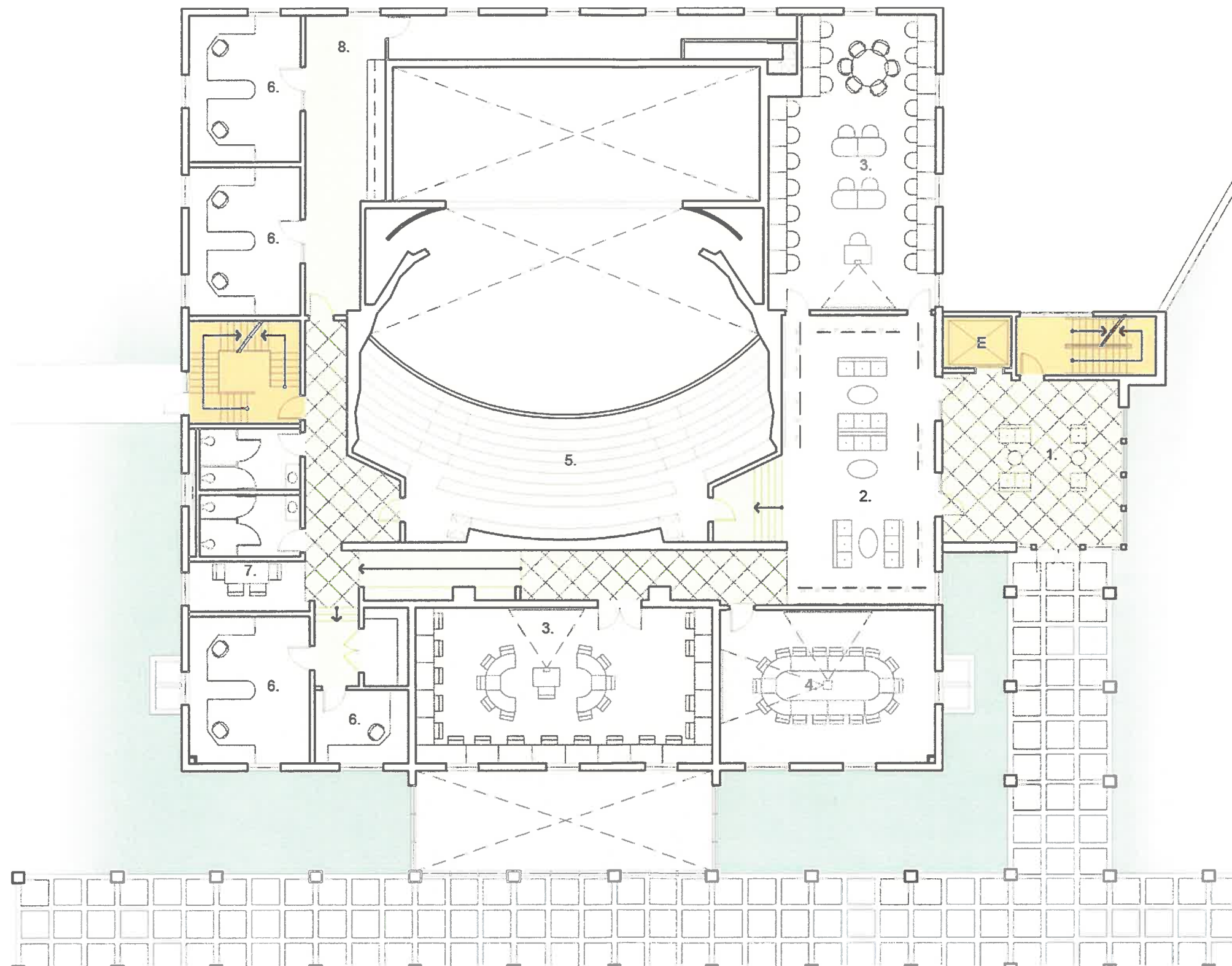
KEY:

- 1. LOBBY
- 2. LOUNGE
- 3. THEATER 305 SEATS
- 4. STAGE
- 5. SIDE STAGE / DANCE STUDIO
- 6. FACULTY OFFICE / SUITE
- 7. ART STUDIO
- 8. CERAMICS STUDIO
- 9. KILN

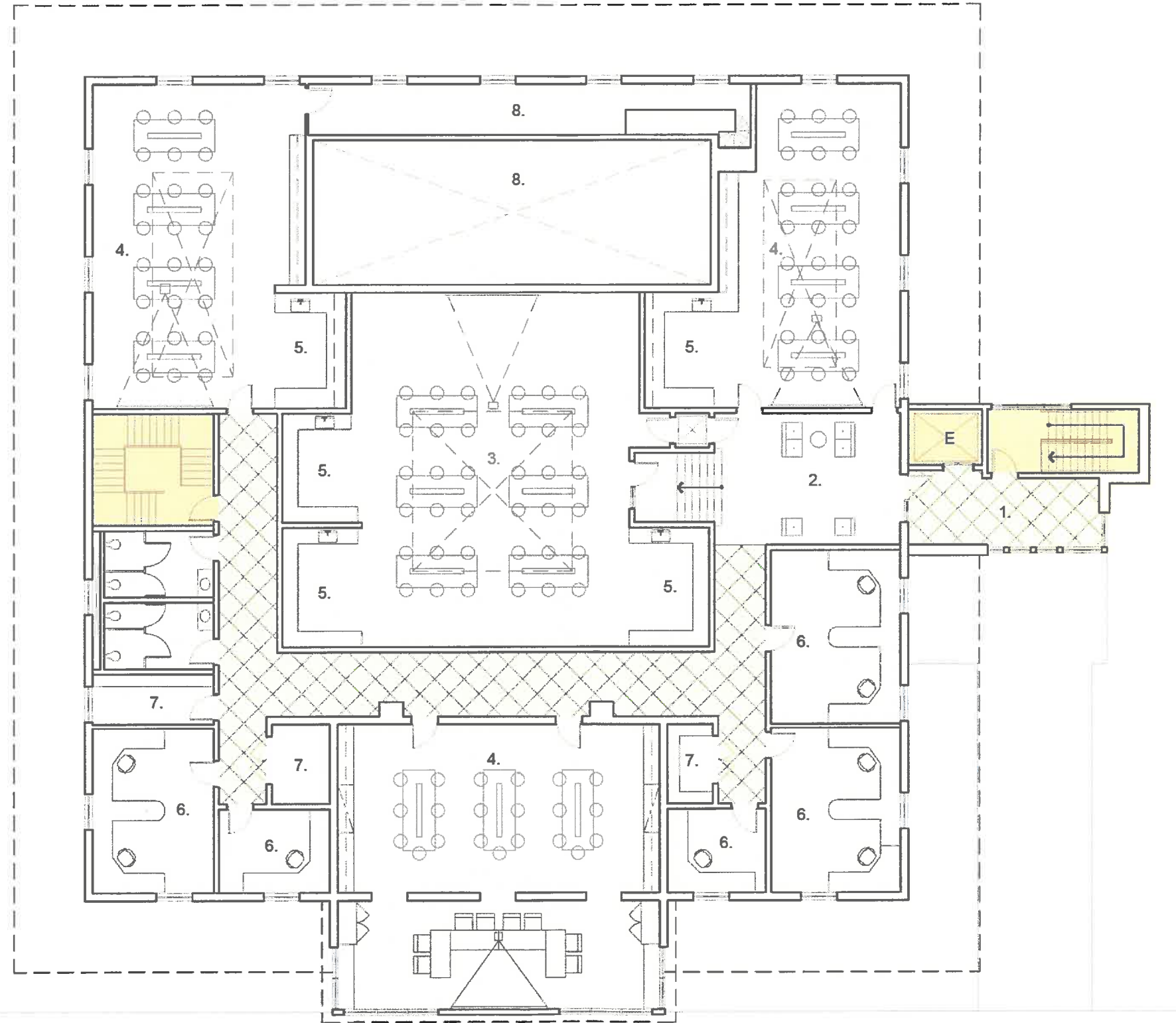
Second Floor Plan

Landmark College - Center For Arts and Sciences Renovations

SCALE: 1/16" = 1'-0"
02.04.2010



- KEY:
- 1. ENTRY LOBBY
 - 2. ART GALLERY / LOUNGE
 - 3. DIGITAL ARTS LAB / CLASSROOM
 - 4. GENERAL USE CLASSROOM
 - 5. BALCONY (115 SEATS)
 - 6. FACULTY OFFICE SUITE
 - 7. STUDENT STUDY ALCOVE
 - 8. STORAGE / SUPPORT



KEY:

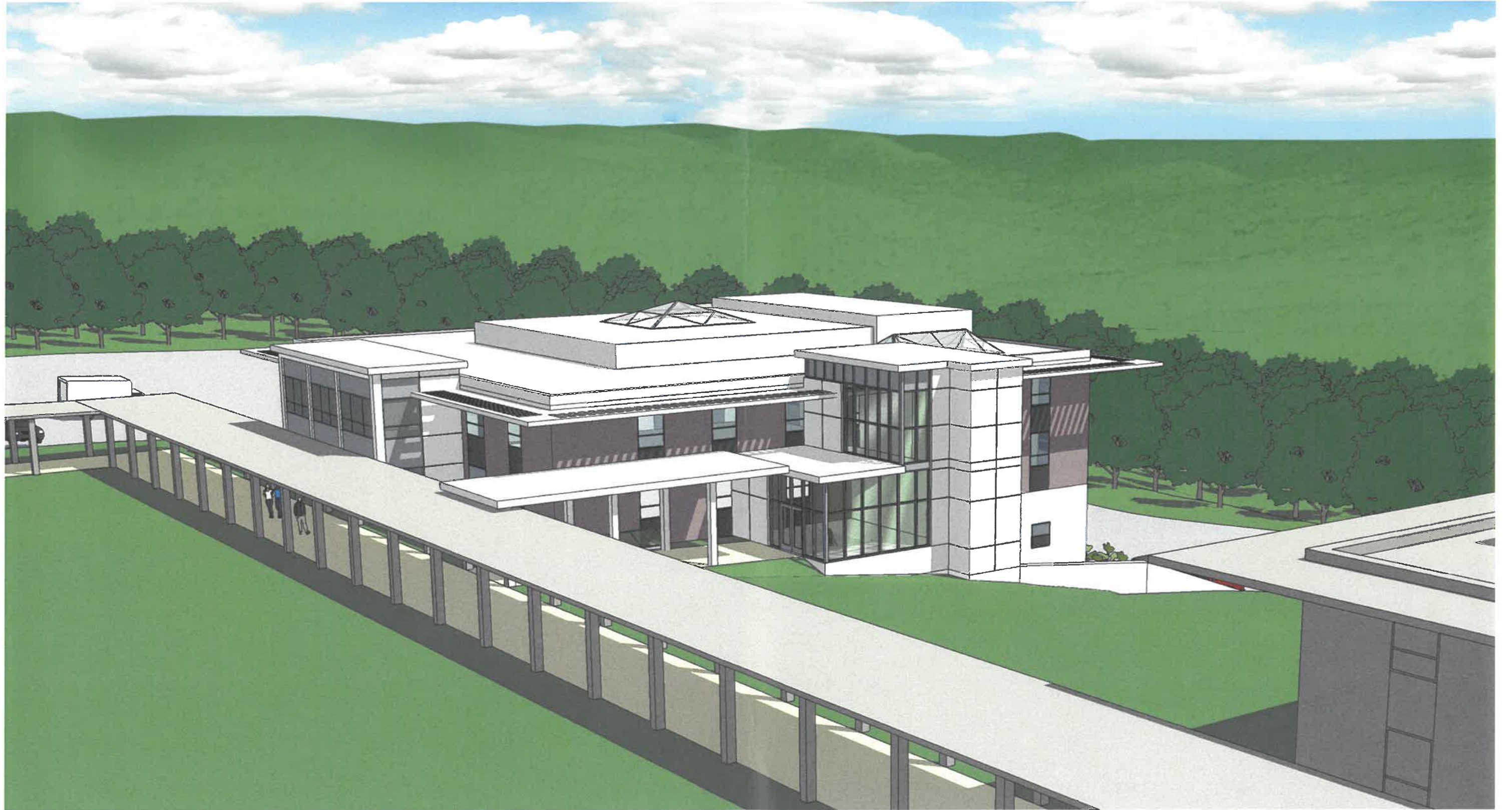
- 1. STAIR LOBBY
- 2. LOUNGE
- 3. SCIENCE LAB (36 STATIONS)
- 4. SCIENCE LAB / CLASSROOM (24 STATIONS)
- 5. LAB PREP
- 6. FACULTY OFFICE SUITE
- 7. STORAGE / SUPPORT
- 8. THEATER FLY LOFT & EQUIPMENT

Fourth Floor Plan

Landmark College - Center For Arts and Sciences Renovations

SCALE: 1/16" = 1'-0"

02.04.2010

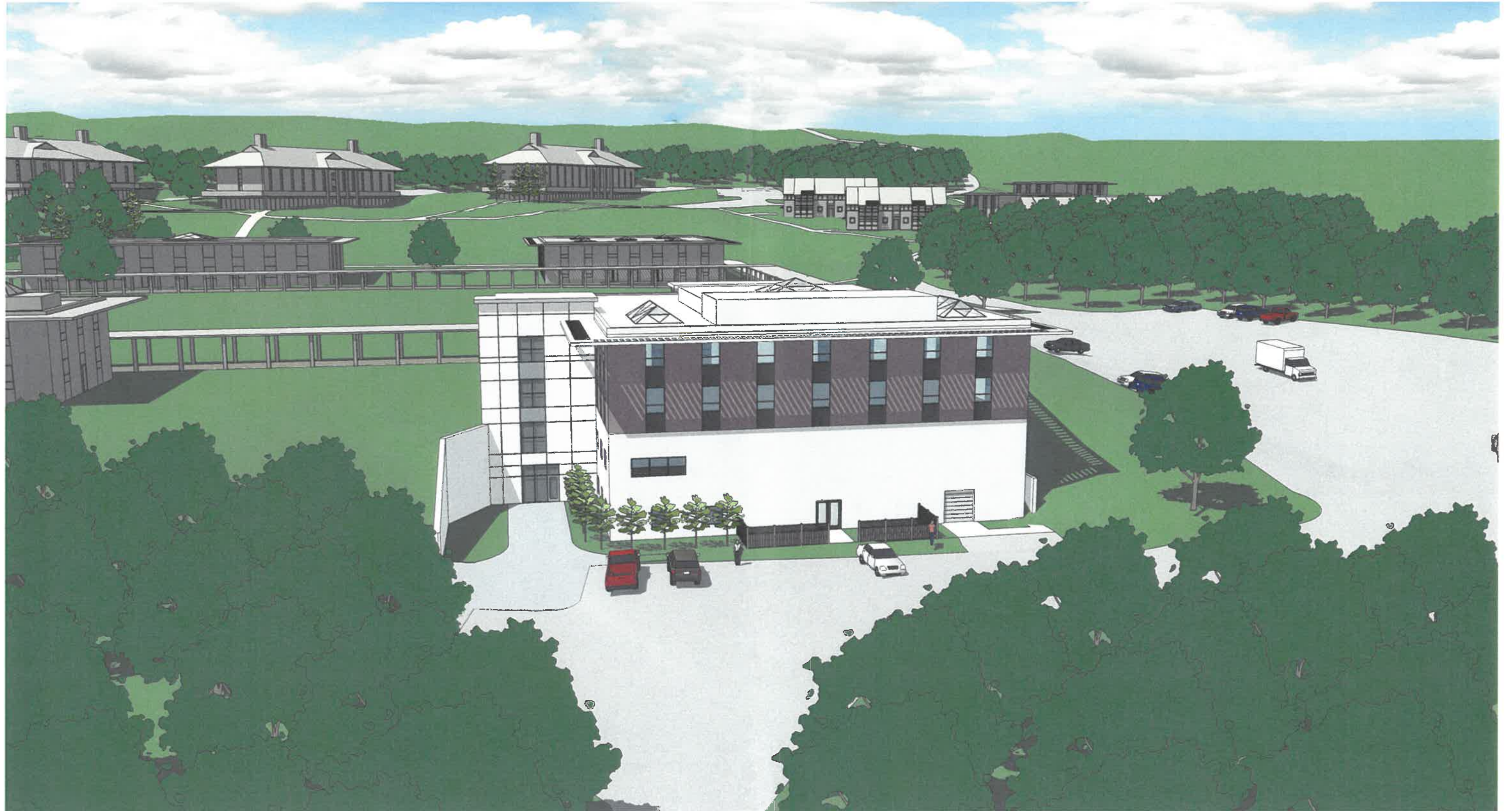


Center for the Arts and Sciences Renovation

Landmark College - Putney, Vermont

February 4, 2010

BreadLoaf
Architects
Planners
Builders

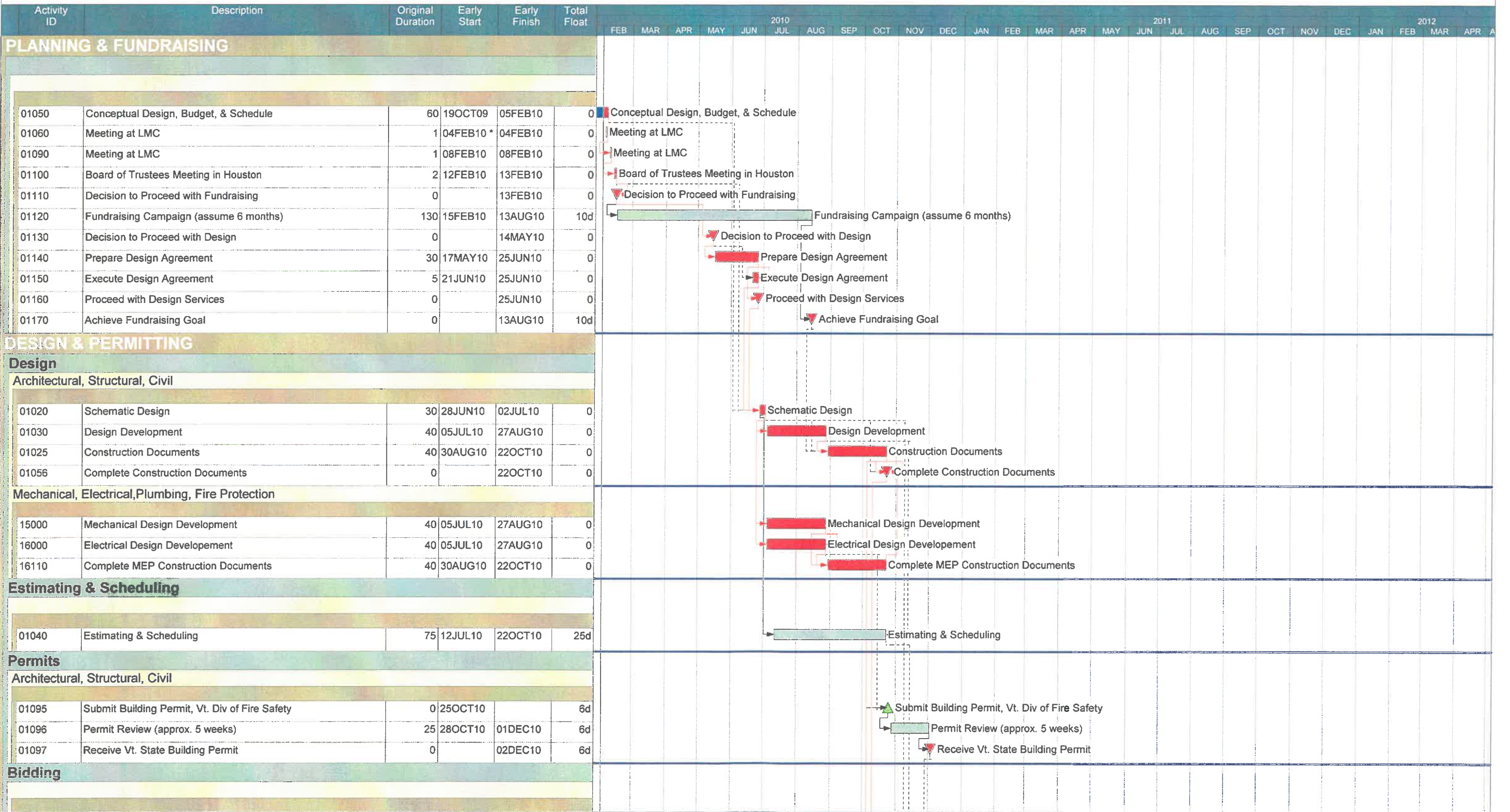


Center for the Arts and Sciences Renovation

Landmark College - Putney, Vermont

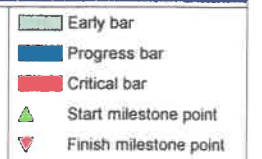
February 4, 2010

BreadLoaf
Architects
Planners
Builders

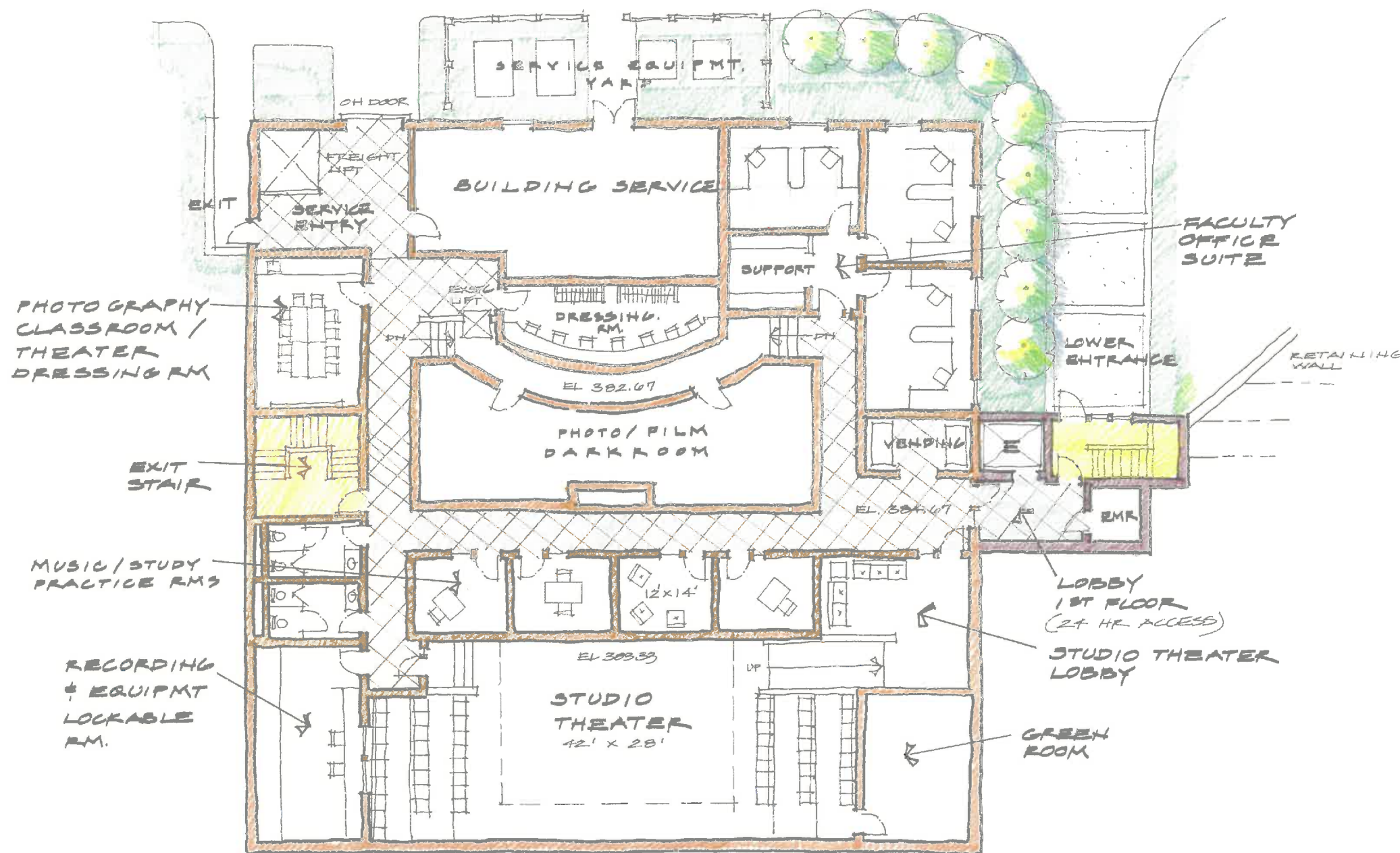


| | |
|---------------------------|------------------|
| Company name | BREAD LOAF |
| Project title | LANDMARK COLLEGE |
| Start date | 12OCT09 |
| Finish date | 16DEC11 |
| Data date | 01FEB10 |
| Run date | 01FEB10 |
| © Primavera Systems, Inc. | |

**Landmark College
Center for Arts and Sciences**

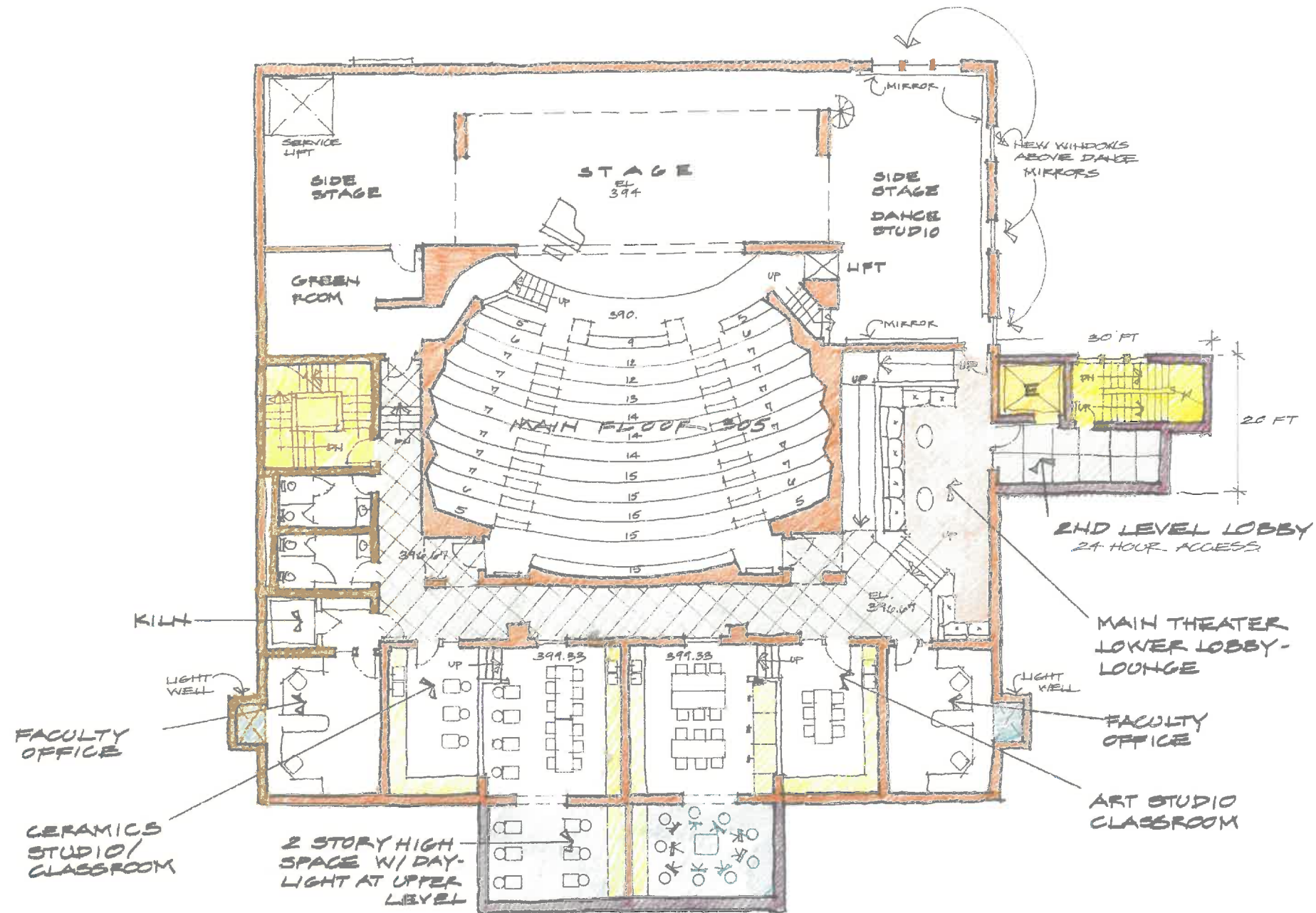


CONFIDENTIAL

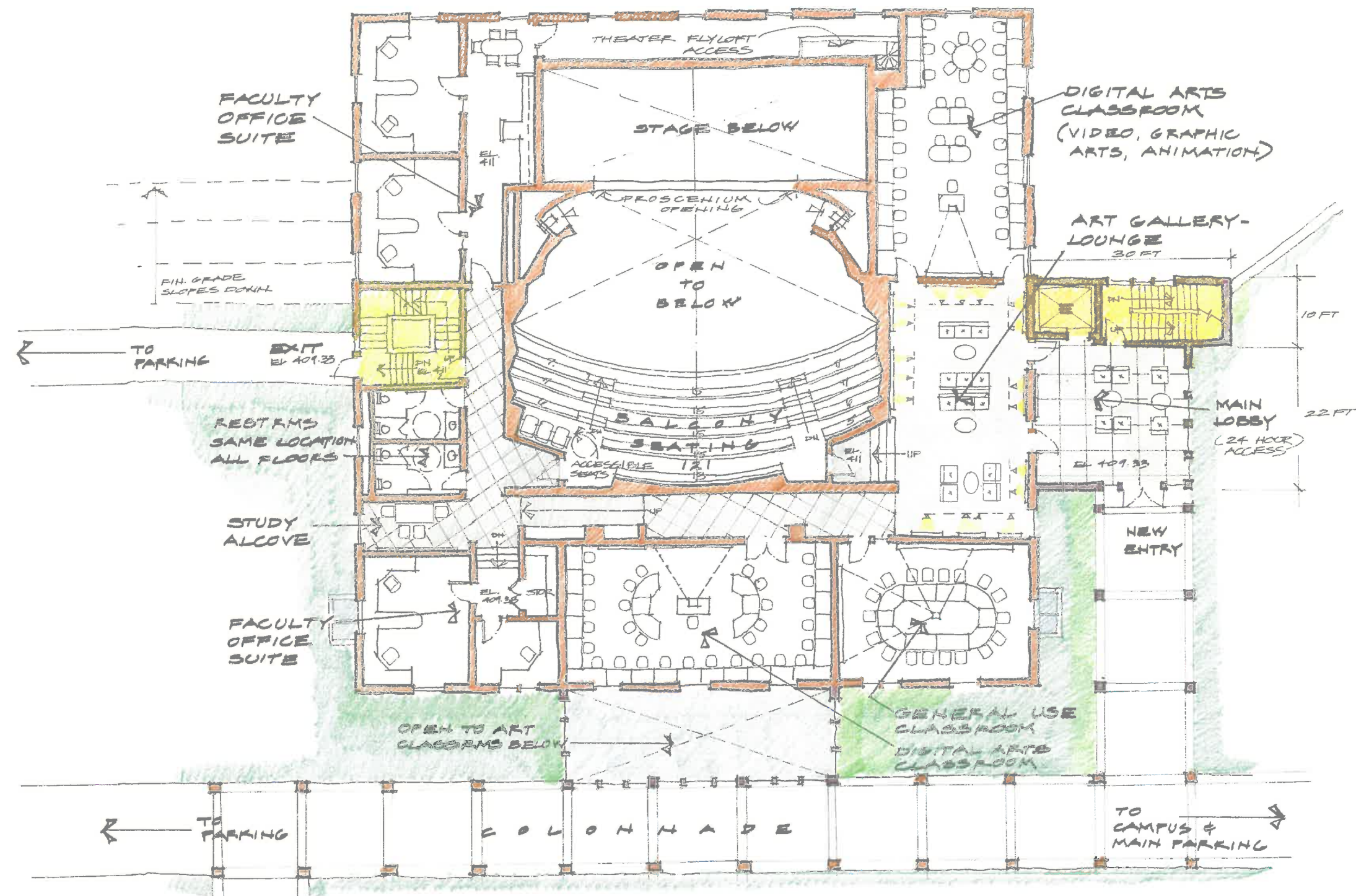


CONFIDENTIAL

CONFIDENTIAL



CONFIDENTIAL



Center for the Arts and Sciences Renovation - Third Floor Plan
 Landmark College - Putney, Vermont

Scale: 1/8" = 1' - 0"
 January 26, 2010

BreadLoaf
 Architects
 Planners
 Builders

CONFIDENTIAL

